

# KENTUCKY DEPARTMENT OF HIGHWAYS

## PRESTON STREET OVER OKOLONA DITCH

### JEFFERSON COUNTY

1-17 Design Plans  
18-24 Shop Plans

REFERENCES AND ESTIMATE OF QUANTITIES												
ITEM	SHEET NO.	CONCRETE CLASS "A"	REINFORCEMENT	STRUCTURAL STEEL	SHEAR CONNECTORS	PROTECTIVE COATING	METAL HANDRAIL		REMOVING EXISTING STRUCTURE	EXCAVATION		
							ALT. "A" ALPH. LIN. FT.	ALT. "B" GALV. STEEL LIN. FT.		COMMON	SOLID ROCK	
		CU. YDS.	LBS.	LINEAL FEET	LINEAL FEET	SQ. YDS.			LINEAL FEET	CU. YDS.	CU. YDS.	
Title Sheet	1											
Layout	2											
General Note	3											
SUBSTRUCTURE QUANTITIES												
Abutment No. 1	8-5-6	113.1	13846							300	50	
Abutment No. 2	7-8-9	113.1	13840							270	60	
Soundings	10											
Armored Edges	AE1 & Sht. 15											
SUPERSTRUCTURE QUANTITIES												
Span-Slab Details	11-12	117.6	28095						①	570	110	
Construction Elevations	13											
Span-Steel Details	14-15-16											
Shear Connector Details	16											
Shoes and Lockers	15											
Armored Edges	15											
Prem. Cork Exp. Jt. Mat. and Polyvinyl Waterstop	0352											
Metal Handrail	H112 or H113						123	123				
TOTAL FOR BRIDGE												
		343.8	55781	① One	② One	552	123	123	③ One	570	110	
BILL OF INCIDENTAL MATERIAL												
ITEM	NO.	SIZE AND DESCRIPTION										
Prem. Cork Exp. Jt. Mat.	2	11'-2" x 11'-0" x 1/2"										
Polyvinyl Waterstop	2	87'-10" Long - See Std. Des. 0352										
Preformed Joint Sealer	1	61'-00" Long - See Std. Des. 0353										

- ① Approximate weight of structural steel = 149684 lbs.
- ② Shear Connectors approximate weight
  - Option 1- 4" Channels #5.4# = 4482 lbs.
  - Option 2- 3/4" x 1/2" studs = 2332 lbs.
  - Option 3- 3/8" x 1/2" mean diameter bar spiral = 2939 lbs.
- ③ Removing existing structure, see General Note, Sheet 3

REFERENCES

- ANSI 1-b
- G352
- G353
- AE 1
- H112
- H113

(THE SPECIAL PROVISION FOR "LINED OIL PROTECTIVE COATING" APPROVED 4-14-64)  
 (THE SPECIAL PROVISION FOR "JOINT SEALER COMPOUND" APPROVED 6-27-62)  
 (THE SPECIAL PROVISION FOR "PREFORMED JOINT SEALER" APPROVED 2-11-64)

BRIDGE OVER OKOLONA DITCH SHEET 1 OF 16

**COMMONWEALTH OF KENTUCKY**  
 DEPARTMENT OF HIGHWAYS  
 FRANKFORT  
 COUNTY OF  
**JEFFERSON**  
 PRESTON STREET

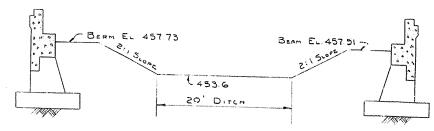
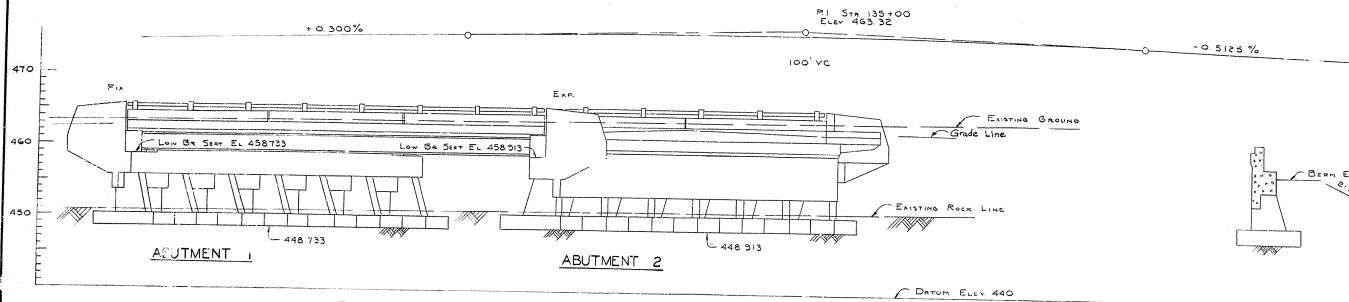
ROAD

STATION 13 4+ 01.8 70 PROJECT NO. \_\_\_\_\_

BRIDGE NUMBER \_\_\_\_\_ DRAWING NO. **14041**

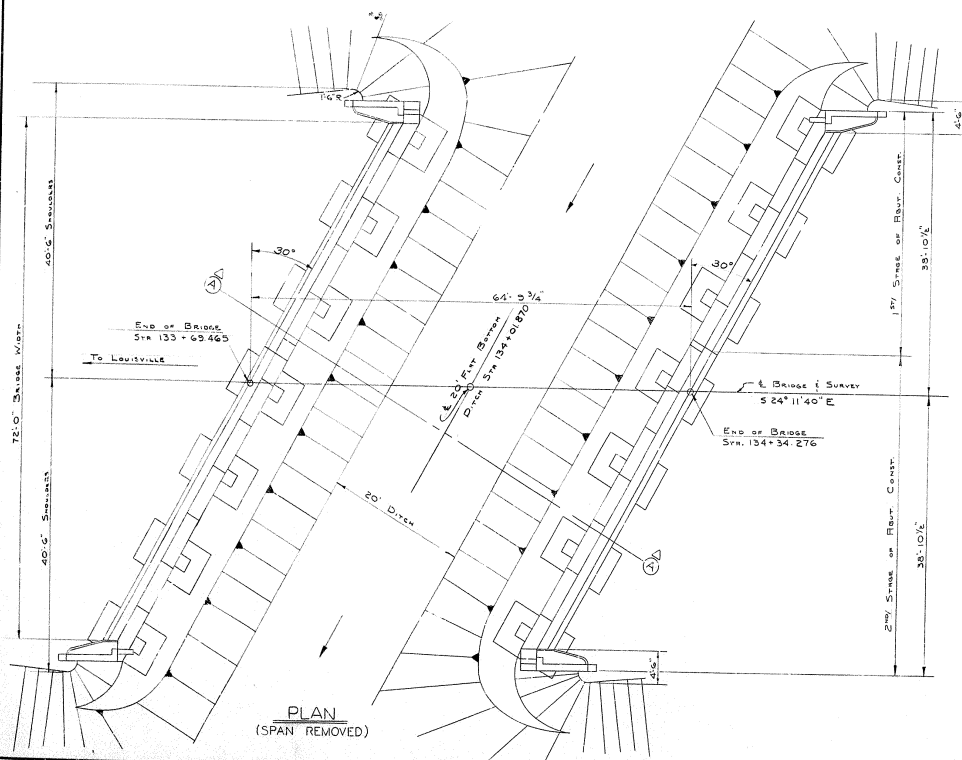
Prepared by: *[Signature]*  
 Checked by: *[Signature]*  
 Approved by: *[Signature]*  
 Date: \_\_\_\_\_

REV.	DATE	BY	CHK.	REASON
7	KY.			

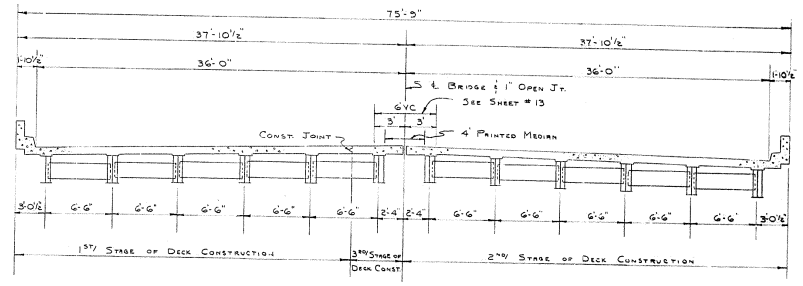


**ELEVATION**  
 ONE 60'-0" SIMPLE WIDE FLANGE STEEL BEAM SPAN (COMP) 30° SKEW RT.  
 12" SAFETY CURBS, 72'-0" ROADWAY, 2:1 FILL SLOPES  
 81'-0" SHOULDERS, H 20-S16-44 LOADING

**SECTION A-A**

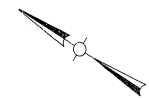


**PLAN**  
(SPAN REMOVED)



**TYPICAL SECTION**  
(SHOWING INTERM. DIAPHRAGMS)

(SHOWING END DIAPHRAGMS)



**LAYOUT**

BRIDGE OVER OKOLONA DITCH SHEET 2

**COMMONWEALTH OF KENTUCKY**  
 DEPARTMENT OF HIGHWAYS  
 FRANKFORT  
 COUNTY OF  
**JEFFERSON**  
 PRESTON STREET

ROAD

STATION 134+01.870 PROJECT NO. 16041

BRIDGE NUMBER 16041

DESIGNED BY: [Signature]  
 CHECKED BY: [Signature]  
 DRAWN BY: [Signature]  
 DATE: [Date]

# GENERAL NOTE

DATE	SCALE	NO. OF SHEETS	TOTAL SHEETS	DATE	NO.
7	KY.				

**SPECIFICATIONS:** Kentucky Department of Highways, current Standards with Amendments.  
**DESIGN LOAD:** Bridge designed for W20-S16A loading as specified in the 1961 A.A.S.H.O. Specifications.  
**DESIGN STRESSES:** For reinforced concrete:

$f_c = 20,000$  p.s.i.       $f_s = 1,200$  p.s.i.  
 $f_t = 3,000$  p.s.i.       $w = 200$  p.s.i. for embedment  
 $u = 300$  p.s.i. for  $\Sigma O$        $n = 10$

For structural steel:  
 $f_s = 20,000$  p.s.i.

**FOUNDATION PRESSURE:** Footings are designed for a maximum pressure of 8000 psf.

**CONCRETE:** Class "A" Concrete is to be used throughout.

**REINFORCEMENT:** Intermediate or hard grade reinforcement shall be used in accordance with A.S.T.M. A15-58T for billet steel, or A16-59T for rail steel conforming to bending requirements of AASHTO Spec. M42. Dimensions shown from face of concrete to bars are clear distances. Spacing of bars is from center to center of bars.

**BEVELED EDGES:** All exposed concrete edges shall be beveled 7/8" unless otherwise shown.

**PREMOULDED CORK EXP. JT. MATERIAL, POLYVINYL WATERSTOP, JOINT SEALING COMPOUND AND PREFORMED SEAL:** The cost of these items is to be included in the unit price bid for Class "A" Concrete.

**PLACING FILLS:** Embankment shall be placed simultaneously in front and back of abutments in compacted layers in accordance with the specifications.

**BEARING AREAS:** Bearing areas to receive superstructure shall be finished smooth and level at the elevations shown on the plans before placing the girders for the span.

**ANCHOR BOLT HOLES:** The Contractor shall exercise care in placing reinforcing steel in top of substructure units to the dimensions shown so as to miss anchor bolt holes.

**ANCHOR BOLTS:** The cost of lead required to set anchor bolts and the cost of drilling anchor bolt holes shall be included in the "Lump Sum Bid" for structural steel. The Contractor shall be responsible for keeping holes dry in freezing weather. At the time of setting anchor bolts are to be heated to a blue heat to assure free flow of lead to bottom of hole.

**CONSTRUCTION JOINTS:** Construction Joints shall be made at locations shown on plans. Provide substantial keys at all construction joints.

**PROTECTIVE COATING:** Protective Coating shall be furnished and placed in accordance with the "Special Provision for Linseed Oil Protective Coating".

**BILL OF INCIDENTAL MATERIAL:** Quantities shown in Bill of Incidental Materials are approximate only, and the Contractor is responsible for furnishing enough material to complete the work in accordance with the Plans and Specifications.

**TEMPORARY SUPPORTS:** Temporary Supports or shoring will not be permitted under steel girders when pouring the concrete floor slab or when taking top of steel elevations.

**PAINT:** All structural steel shall be given one shop coat of type 1 red lead paint and two field coats of aluminum paint in accordance with the specifications. Shop paint shall not be applied within 3" of open holes where high strength bolts are to be used for field connections and shall not be applied to steel in contact with concrete.

**REMOVING EXISTING STRUCTURE:** This contract includes removal of existing concrete bridge in accordance with the plans and specifications. The existing bridge is not to be removed until the initial stage of the new work is completed and open to traffic. The cost of all work, labor, equipment and incidentals shall be included in the "Lump Sum Bid" for removing the two existing structures.

**MATERIALS:** A.S.T.M. Specifications herein after designated shall govern materials furnished:

Structural Steel	A36-62T
Steel Deck Castings	A249-55
High Strength Bolts, Nuts, Washers	A325-61T
Stud Shear Connectors	A108-C1015
Molten Lead & Lead Plates	B21-55

**CONNECTIONS:** Unless otherwise provided, shop and field connections shall be 7/8" high strength bolts. Open holes shall be 1/16" diameter.

**STRUCTURAL STEEL:** "Lump Sum Bid" for structural steel shall be full payment for all structural steel, bolts, washers, steel pins, cast lead plates, molten lead, welding and welding materials, paint, tracings of shop detail and erection drawings, and all tools, labor and materials necessary to erect the structural steel in accordance with the plans and specifications.

**MILL TEST REPORTS:** Notarized mill test reports in triplicate shall be furnished the Kentucky Department of Highways showing that all materials furnished conform to the specifications.

**STEEL FINISH:** See table on sheet No. 15

**DIMENSIONS:** Dimensions are for a normal temperature of 60° Fahrenheit.

**CHANGES IN STRUCTURAL STEEL QUANTITIES:** In the event that changes in steel quantities are required due to changes by the Engineer in the plans, additional payments therefor shall be made at a unit price which will be equal to the contract Lump Sum price divided by the estimated total weight.

**WELDING SPECIFICATIONS:** Welding, welders, welding materials and welding procedures shall comply with American Welding Society Specifications for welded Highway and Railway Bridges, 1963 Edition with paragraph modifications and additions shown on Standard Drawing AWS-1.

**SHOP ASSEMBLY:** Connections for diaphragms may be punched or drilled full size without assembly.

**PLATES:** Plates in shoes must be true and free of warp.

**OPTIONAL TYPES OF SHEAR CONNECTORS:** The Contractor shall use one of the following types throughout:  
 Option "1" - 4" channel #5.44 / Option "2" - 3/8"x4" studs / Option "3" - 3/4"x4" main diam. bar spiral

**SHEAR CONNECTORS:** "Lump Sum Bid" for shear connectors shall be full payment for all shear connectors, welding and welding materials, patent royalties, and all labor and materials necessary to field weld or shop weld shear connectors in place. In accordance with the plans and specifications. Connectors shall be welded with approved welding equipment.

**HIGH STRENGTH BOLTS:** Connections using high strength bolts shall be in accordance with section 5.2.3-A-5(1) of the specifications. Assembly and dimensions of high strength steel bolts, nuts and washers shall conform to "Specifications for Structural Joints using A.S.T.M. A325 Bolts" March 1960, approved by the "Research Council on Riveted and Bolted Structural Joints" of the Engineering Foundation. All joints are designed as friction type connections. Installation shall be performed by the turn of nut method.

**SHOP PLANS:** The Contractor shall submit shop detail plans in accordance with the Specifications.

**FIELD WELDING:** Where field welding is indicated, welding shall be performed in accordance with the specifications for welding materials and welding. Welding procedures shall be submitted by the erector to the Department of Highways for approval.

**TRAFFIC DETOUR:** When initial stage of construction is complete and ready for traffic, the Contractor shall be responsible for furnishing adequate barricades and other safeguards according to the Specifications and as directed by the Engineer. The cost of this work is to be included in the Lump Sum Bid for removing existing structure.

PREPARED BY: *[Signature]*  
 CHECKED BY: *[Signature]*  
 DATE: *[Date]*

BRIDGE OVER DYKOLONA DITCH      SHEET 3

**COMMONWEALTH OF KENTUCKY**  
 DEPARTMENT OF HIGHWAYS  
 FRANKFORT  
 COUNTY OF  
**JEFFERSON**  
 PRESTON STREET  
 ROAD

STATION 1410.870      PROJECT NO.

BRIDGE NUMBER      DRAWING NO. 16041

NO.	DATE	BY	CHKD.	REVISION
7	KY.			

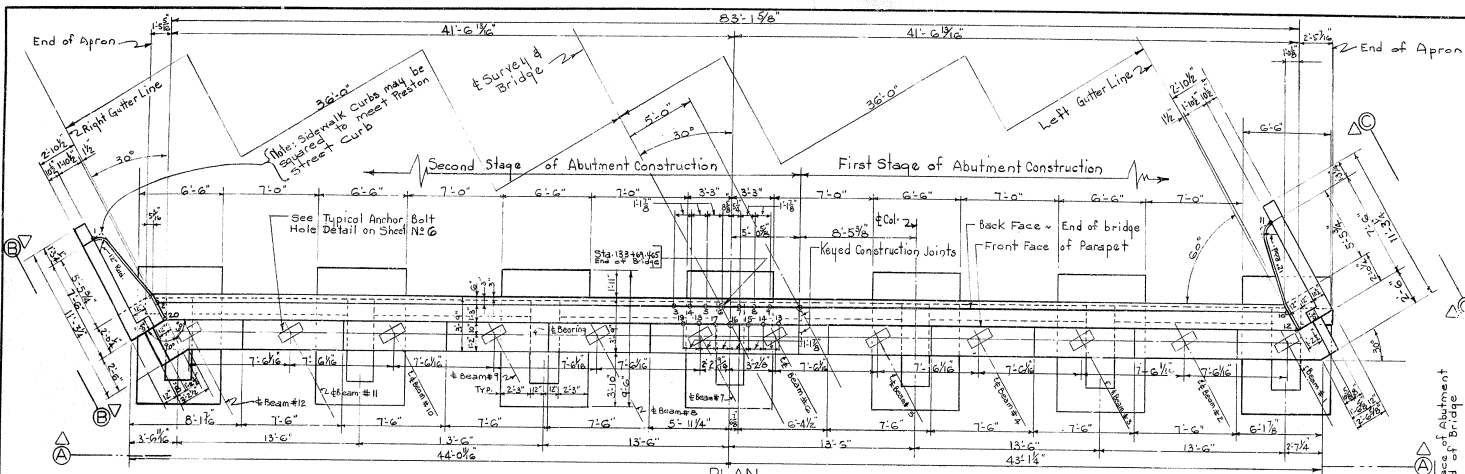
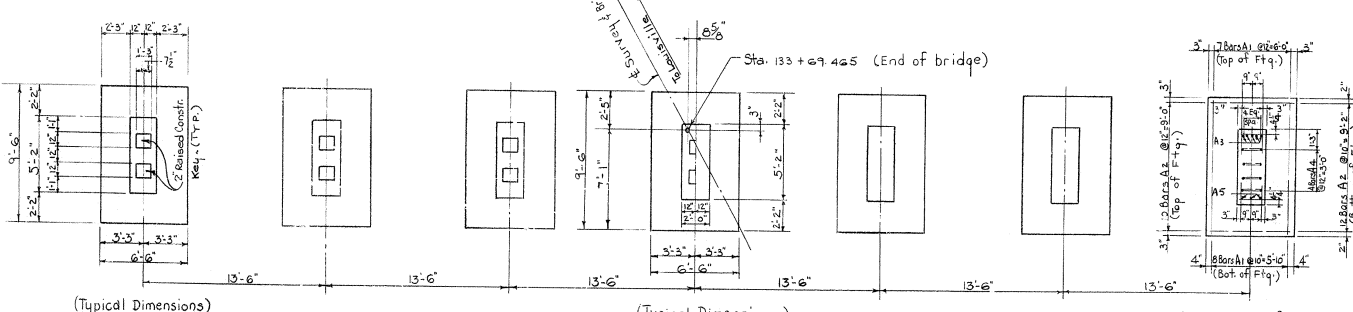
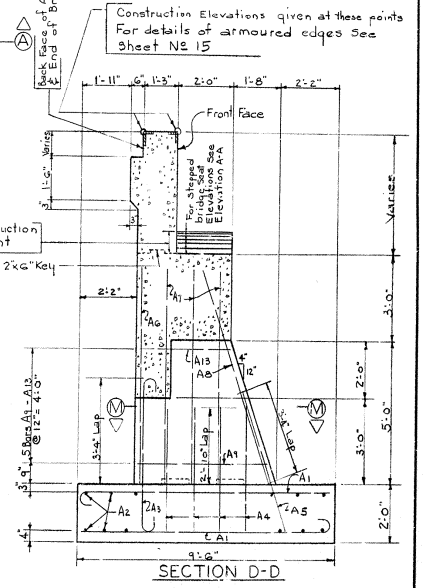
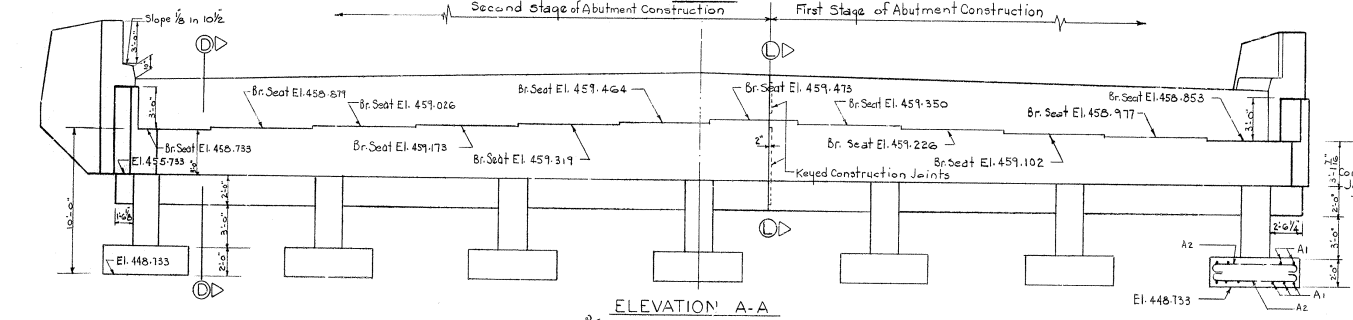


TABLE OF CONSTRUCTION ELEVATIONS		
NUMBER	ELEVATION	LOCATION
1	462.931	Top of curb @ End of wing
2	462.116	Gutter Line back face of abutment
3	462.861	Back face of Parapet wall
4	462.680	
5	462.892	
6	462.897	
7	462.895	
8	462.887	
9	462.871	
10	462.241	Gutter Line Back Face of Abutment
11	463.856	Top of curb @ End of wing
12	462.243	Front Face of Parapet Wall
13	462.875	
14	462.891	
15	462.900	
16	462.901	
17	462.896	
18	462.884	
19	462.865	
20	462.121	Outer Line front face of Abutment



BRIDGE OVER OKOLONA DITCH SHEET 4

**COMMONWEALTH OF KENTUCKY**  
 DEPARTMENT OF HIGHWAYS  
 FRANKFORT  
 COUNTY OF  
**JEFFERSON**  
 PRESTON STREET  
 ROAD

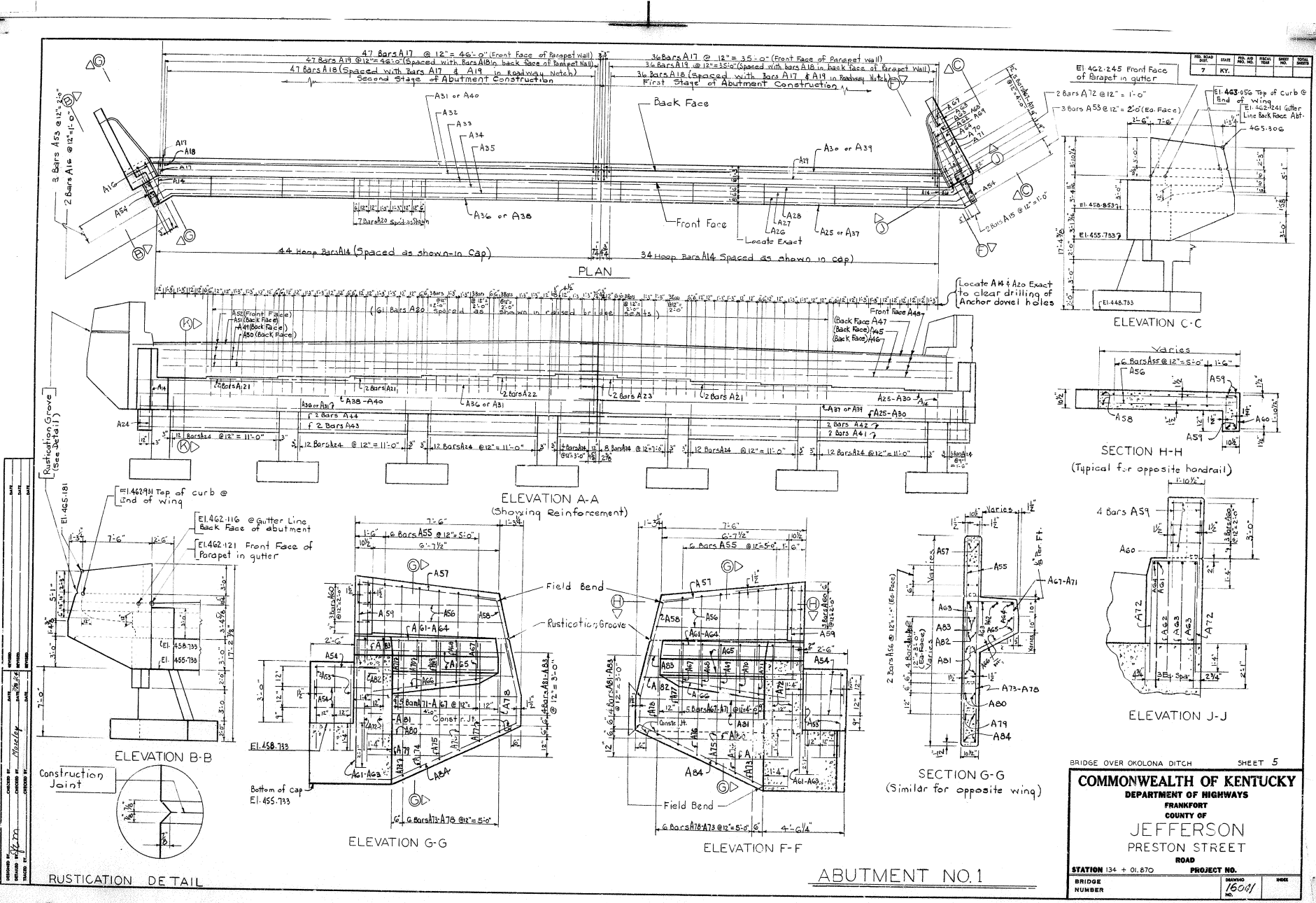
STATION 134+01.870 PROJECT NO. **1604**

BRIDGE NUMBER **1604** DRAWING NO. **1604**

DESIGNED BY: [Name] DATE: [Date]  
 CHECKED BY: [Name] DATE: [Date]  
 DRAWN BY: [Name] DATE: [Date]

ABUTMENT NO 1





BRIDGE OVER OKOLONA DITCH SHEET 5

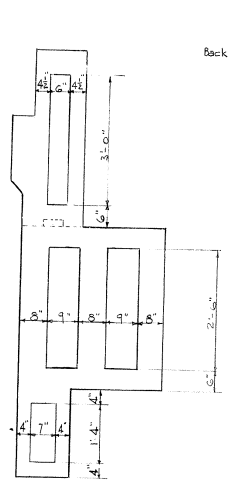
**COMMONWEALTH OF KENTUCKY**  
 DEPARTMENT OF HIGHWAYS  
 FRANKFORT  
 COUNTY OF  
 JEFFERSON  
 PRESTON STREET  
 ROAD

STATION 134 + 01.870 PROJECT NO. 160A

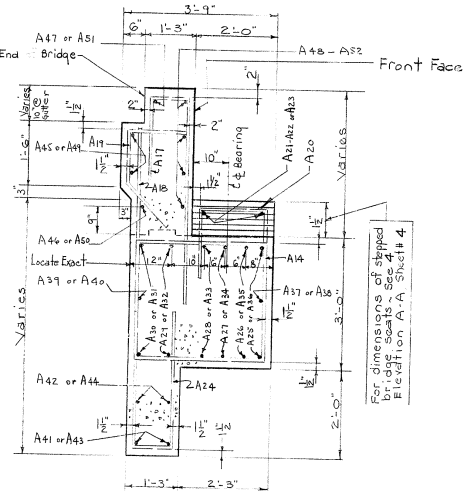
BRIDGE NUMBER 160A

**BILL OF REINFORCEMENT**

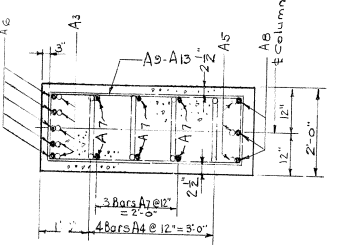
Mark	Type	NS	Length	Location	FT	IN	FT	IN	FT	IN	FT	IN
A1	①	10	10	Footings	4	0	10	0	0	0	0	0
A2	②	10	10	Col. Dowels	4	5	10	0	0	0	0	0
A3	③	10	10	Columns	4	4	0	0	0	0	0	0
A4	④	10	10	Col. Hoops	4	4	0	0	0	0	0	0
A5	⑤	10	10	Main Cap	3	3	0	0	0	0	0	0
A6	⑥	10	10	Cap Under St. Wdg	3	3	0	0	0	0	0	0
A7	⑦	10	10	Front Face of Parapet	5	5	0	0	0	0	0	0
A8	⑧	10	10	Rawly Notch	4	4	0	0	0	0	0	0
A9	⑨	10	10	Raised Bridge Seats	1	4	1	9	0	0	0	0
A10	⑩	10	10	Apron	3	2	1	0	0	0	0	0
A11	⑪	10	10	Cap - 1st Four	40	3/2	1	4/2	1	2/4	0	10/4
A12	⑫	10	10	Cap - 2nd Four	40	3/2	1	4/2	1	2/4	0	10/4
A13	⑬	10	10	Cap - 1st Four	40	3/2	1	4/2	1	2/4	0	10/4
A14	⑭	10	10	Cap - 2nd Four	40	3/2	1	4/2	1	2/4	0	10/4
A15	⑮	10	10	Apron - 1st Four	47	4/2	2	2/2	2	4/6	1	4/4
A16	⑯	10	10	Apron - 2nd Four	47	4/2	2	2/2	2	4/6	1	4/4
A17	⑰	10	10	Rawly Notch - 1st Four	37	0	1	4	1	7/8	0	0
A18	⑱	10	10	Rawly Notch - 2nd Four	37	0	1	4	1	7/8	0	0
A19	⑲	10	10	Parapet - 1st Four	37	0	1	4	1	7/8	0	0
A20	⑳	10	10	Parapet - 2nd Four	37	0	1	4	1	7/8	0	0
A21	㉑	10	10	Stab Wall	3	8/2	0	5	0	0	0	0
A22	㉒	10	10	Handrail	4	2/4	0	7/2	0	0	0	0
A23	㉓	10	10	Handrail End Post	1	1/2	0	7/2	0	3	0	0
A24	㉔	10	10	Wing into Cap	1	1	0	10	0	0	0	0
A25	㉕	10	10	Curb	4	4	1	10	1	9/2	0	4/2
A26	㉖	10	10	Curb into Cap	4	4	1	10	1	9/2	0	4/2
A27	㉗	10	10	Wing Wall	0	8/2	1	5	1	7	0	7
A28	㉘	10	10	Wing Wall	0	8/2	1	5	1	7	0	7
A29	㉙	10	10	Wing Wall	0	8/2	1	5	1	7	0	7
A30	㉚	10	10	Wing Wall	0	8/2	1	5	1	7	0	7
A31	㉛	10	10	Wing Wall	0	8/2	1	5	1	7	0	7
A32	㉜	10	10	Wing Wall	0	8/2	1	5	1	7	0	7
A33	㉝	10	10	Wing Wall	0	8/2	1	5	1	7	0	7
A34	㉞	10	10	Wing Wall	0	8/2	1	5	1	7	0	7
A35	㉟	10	10	Wing Wall	0	8/2	1	5	1	7	0	7
A36	㊱	10	10	Wing Wall	0	8/2	1	5	1	7	0	7
A37	㊲	10	10	Wing Wall	0	8/2	1	5	1	7	0	7
A38	㊳	10	10	Wing Wall	0	8/2	1	5	1	7	0	7
A39	㊴	10	10	Wing Wall	0	8/2	1	5	1	7	0	7
A40	㊵	10	10	Wing Wall	0	8/2	1	5	1	7	0	7



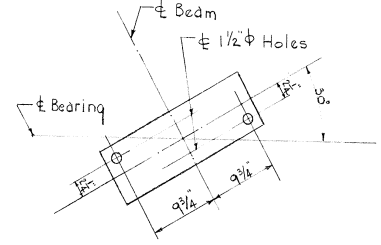
SECTION L-L (Showing construction keys)



SECTION K-K



SECTION M-M



DETAIL OF ANCHOR BOLT HOLES (TYPICAL)

**ESTIMATE OF QUANTITIES**

CONCRETE, CLASS "A"	113.1	CUYDS.
REINFORCEMENT	13846	LBS

**ABUTMENT NO. 1**

BRIDGE OVER OKOLONA DITCH SHEET 6

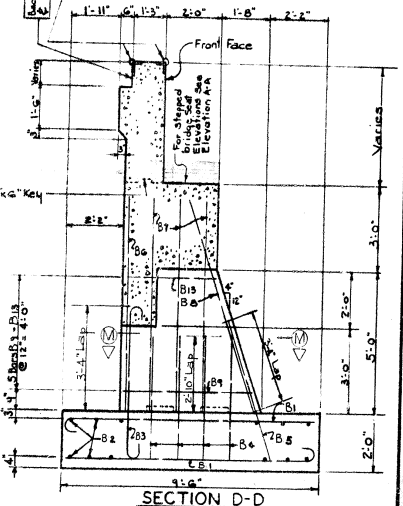
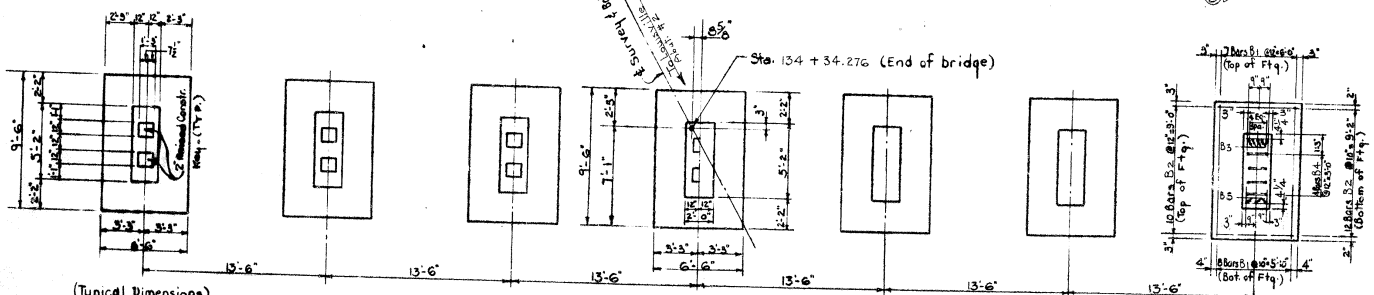
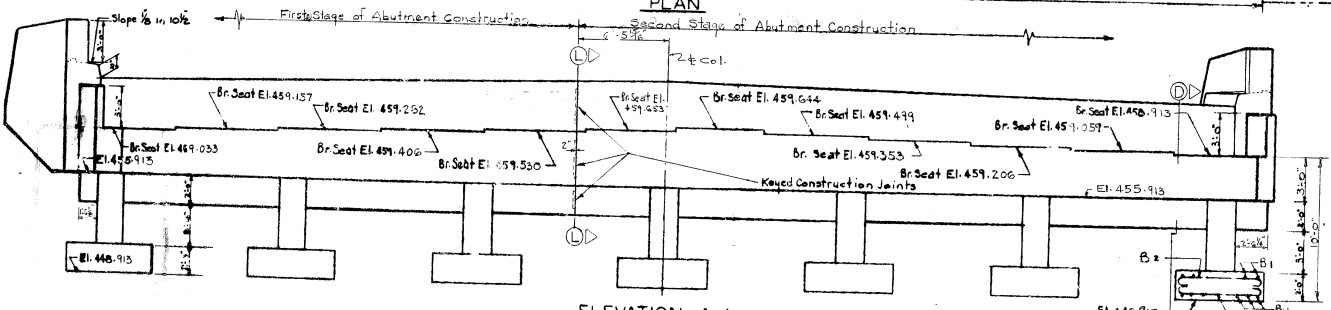
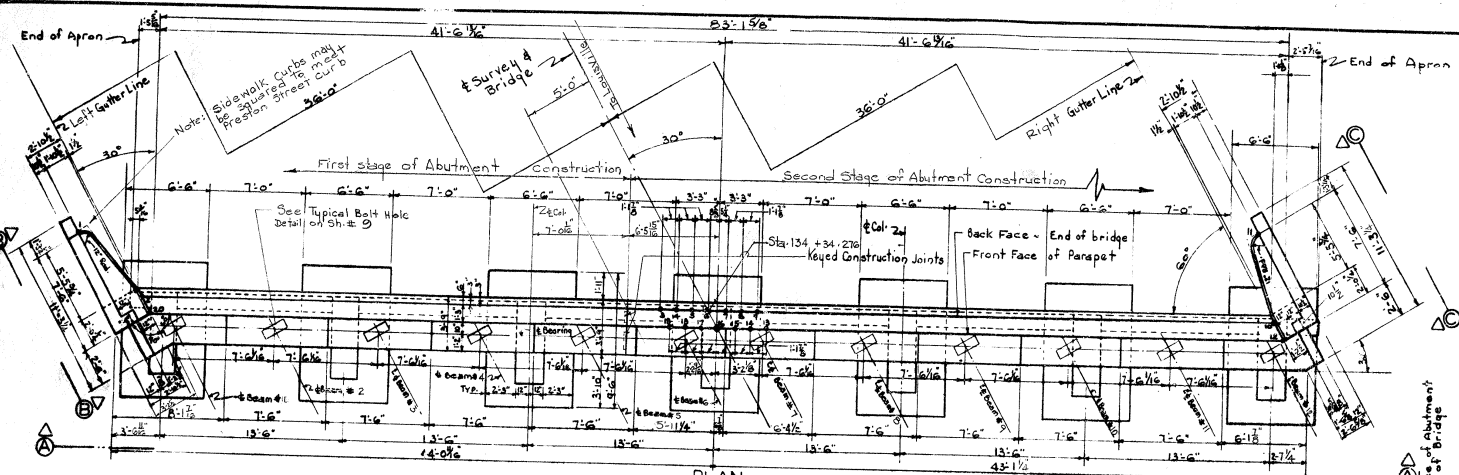
**COMMONWEALTH OF KENTUCKY**  
 DEPARTMENT OF HIGHWAYS  
 FRANKFORT  
 COUNTY OF  
**JEFFERSON**  
 PRESTON STREET  
 ROAD

STATION 134 + 01.870 PROJECT NO. 16041

BRIDGE NUMBER 16041

TABLE OF CONSTRUCTION ELEVATIONS		
NUMBER	ELEVATION	LOCATION
1	463.282	Top of curb @ End of wing
2	462.434	Gutter Line back face of abutment
3	463.088	Back face of Parapet wall
4	463.081	
5	463.090	
6	463.092	
7	463.086	
8	463.074	
9	463.053	
10	463.311	Gutter Line back face of Abutment
11	463.162	Top of curb @ End of wing
12	462.306	Front Face of Parapet wall
13	463.05	
14	463.070	
15	463.083	
16	463.087	
17	463.085	
18	463.077	
19	463.061	
20	462.430	Gutter Line front face of Abutment

Construction Elevations given at these points  
For details of armoured edges See  
Sheet NE 15

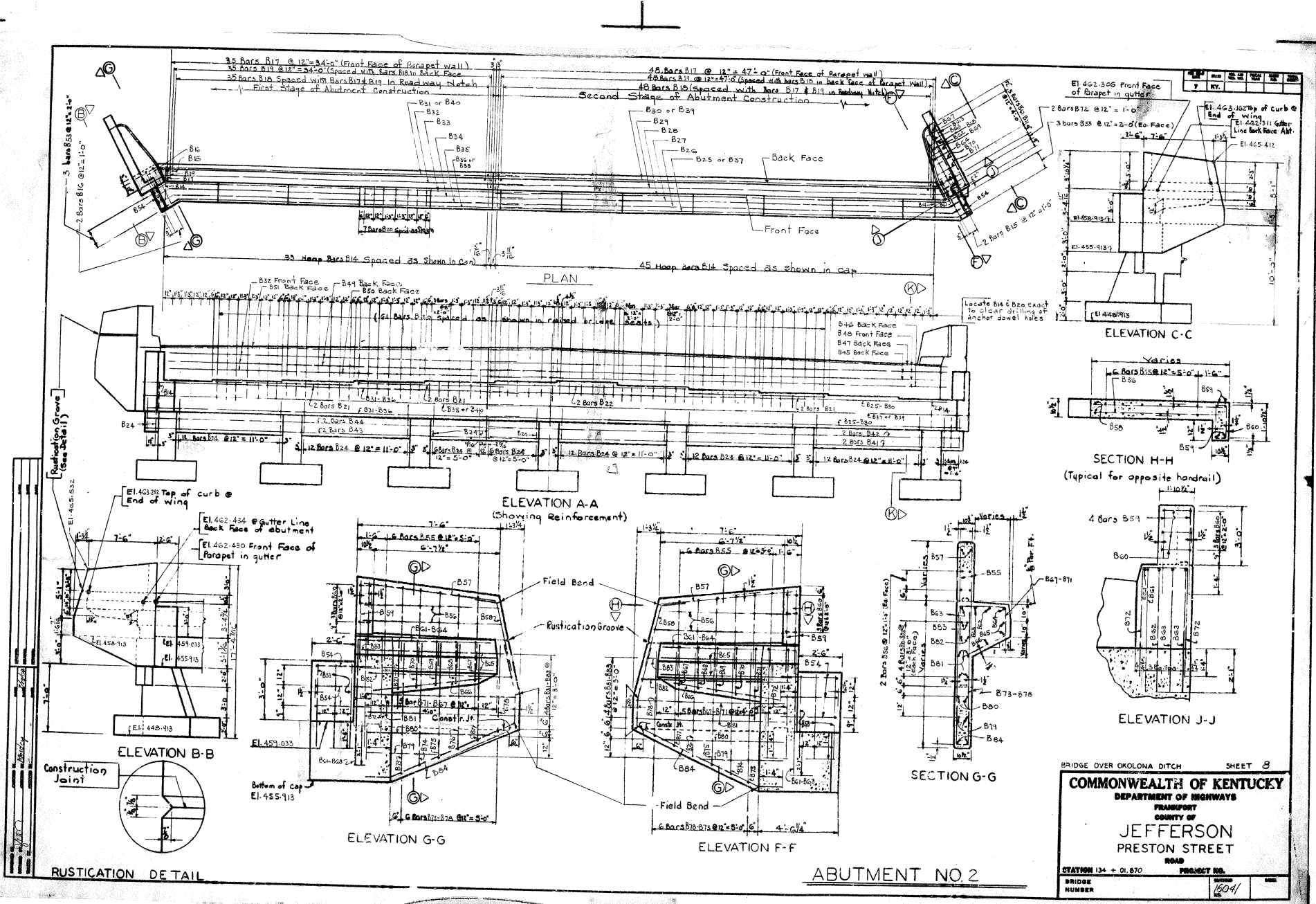


BRIDGE OVER OKOLONA DITCH SHEET 7

**COMMONWEALTH OF KENTUCKY**  
DEPARTMENT OF HIGHWAYS  
FRANKFORT  
COUNTY OF  
**JEFFERSON**  
PRESTON STREET  
ROAD

STATION 134 + 01.870 PROJECT NO. 18041

ABUTMENT NO 2

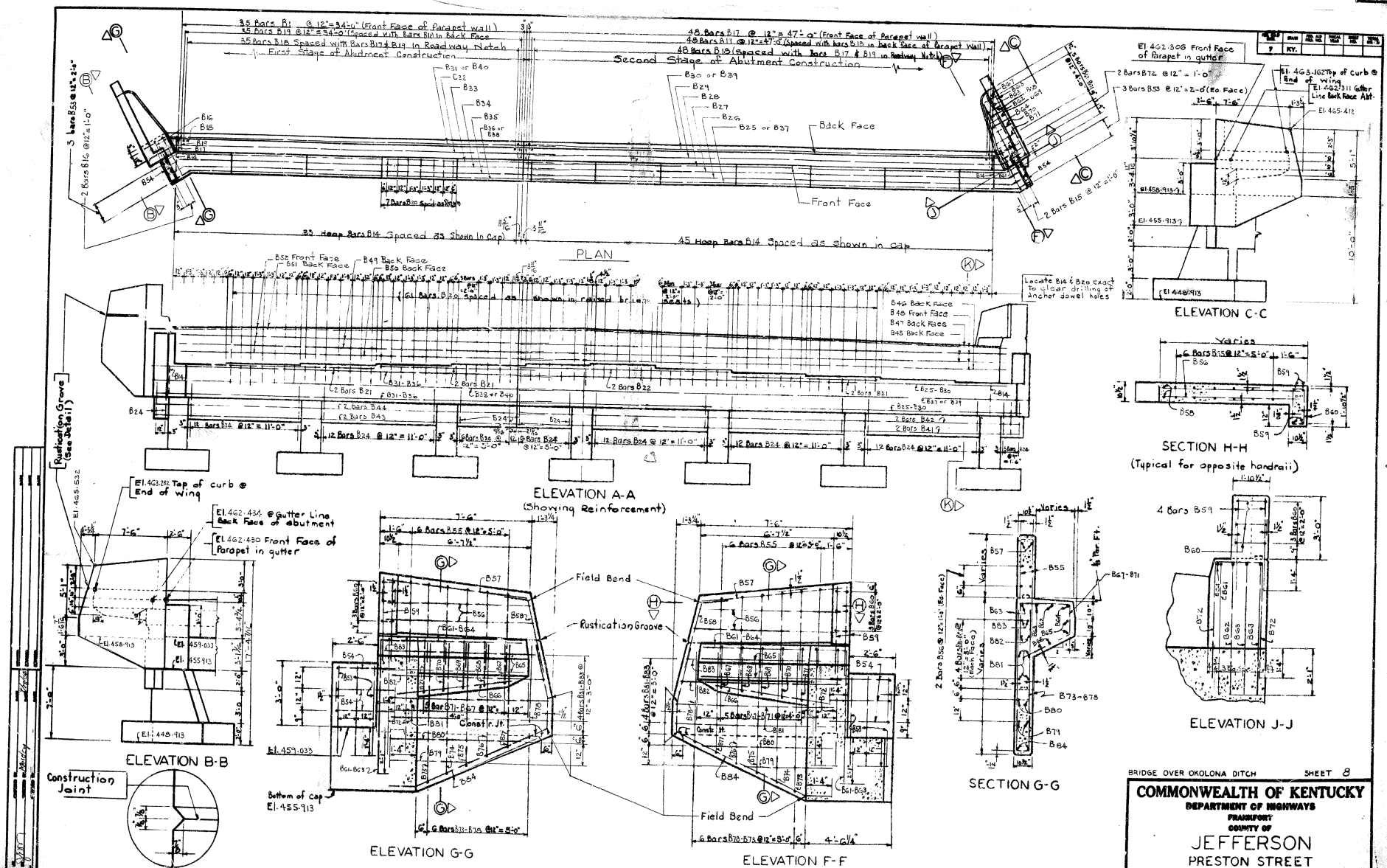


BRIDGE OVER OKOLONA DITCH SHEET 8

**COMMONWEALTH OF KENTUCKY**  
 DEPARTMENT OF HIGHWAYS  
 FRANKFORT  
 COUNTY OF  
**JEFFERSON**  
 PRESTON STREET  
 ROAD

STATION 134 + 01.870 PROJECT NO. 18041

**ABUTMENT NO. 2**



RUSTICATION DE TAIL

ABUTMENT NO. 2

BRIDGE OVER OKOLONA DITCH SHEET 8

**COMMONWEALTH OF KENTUCKY**  
 DEPARTMENT OF HIGHWAYS  
 FRANKFORT  
 COUNTY OF  
 JEFFERSON  
 PRESTON STREET  
 ROAD

STATION 134 + 0.870 PROJECT NO. 1604  
 BRIDGE NUMBER 1604



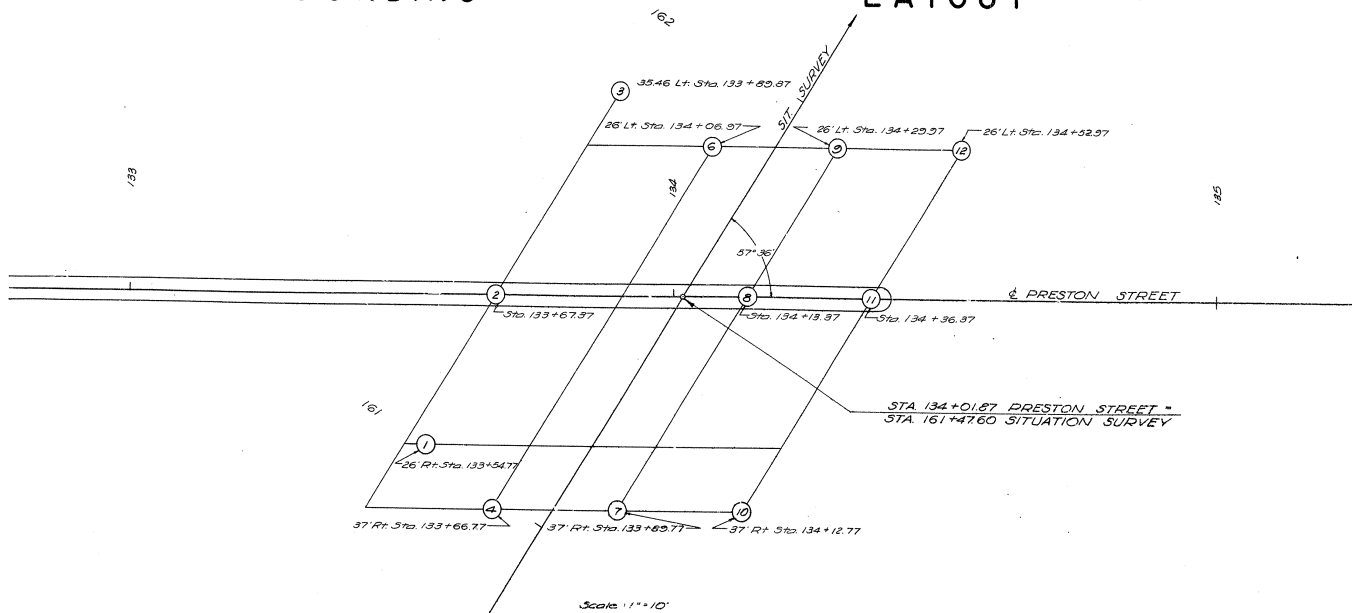


# SOUNDING

# LAYOUT

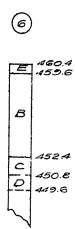
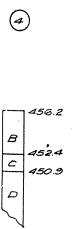
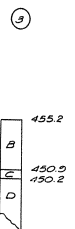
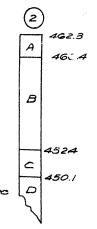
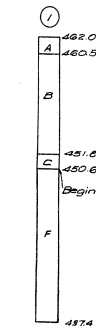
JEFFERSON CO. S 47B (12)

AREA	PERCENT	TOTAL
11		



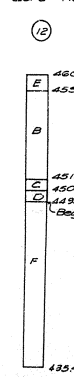
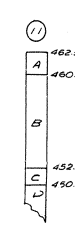
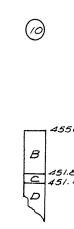
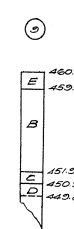
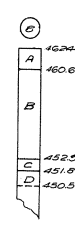
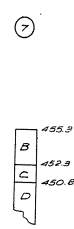
Core Hole

Core Hole



- LEGEND**
- A --- Fill Sand & Gravel
  - B --- Yellow Sandy Clay
  - C --- Blue Clay
  - D --- Clay Shale
  - E --- Yellow Sandy Clay & Gravel
  - F --- Black Shale

Vertical Scale 1" = 5'



83.3% Recovery

82.6% Recovery

BRIDGE OVER OKOLONA DITCH SHEET 10

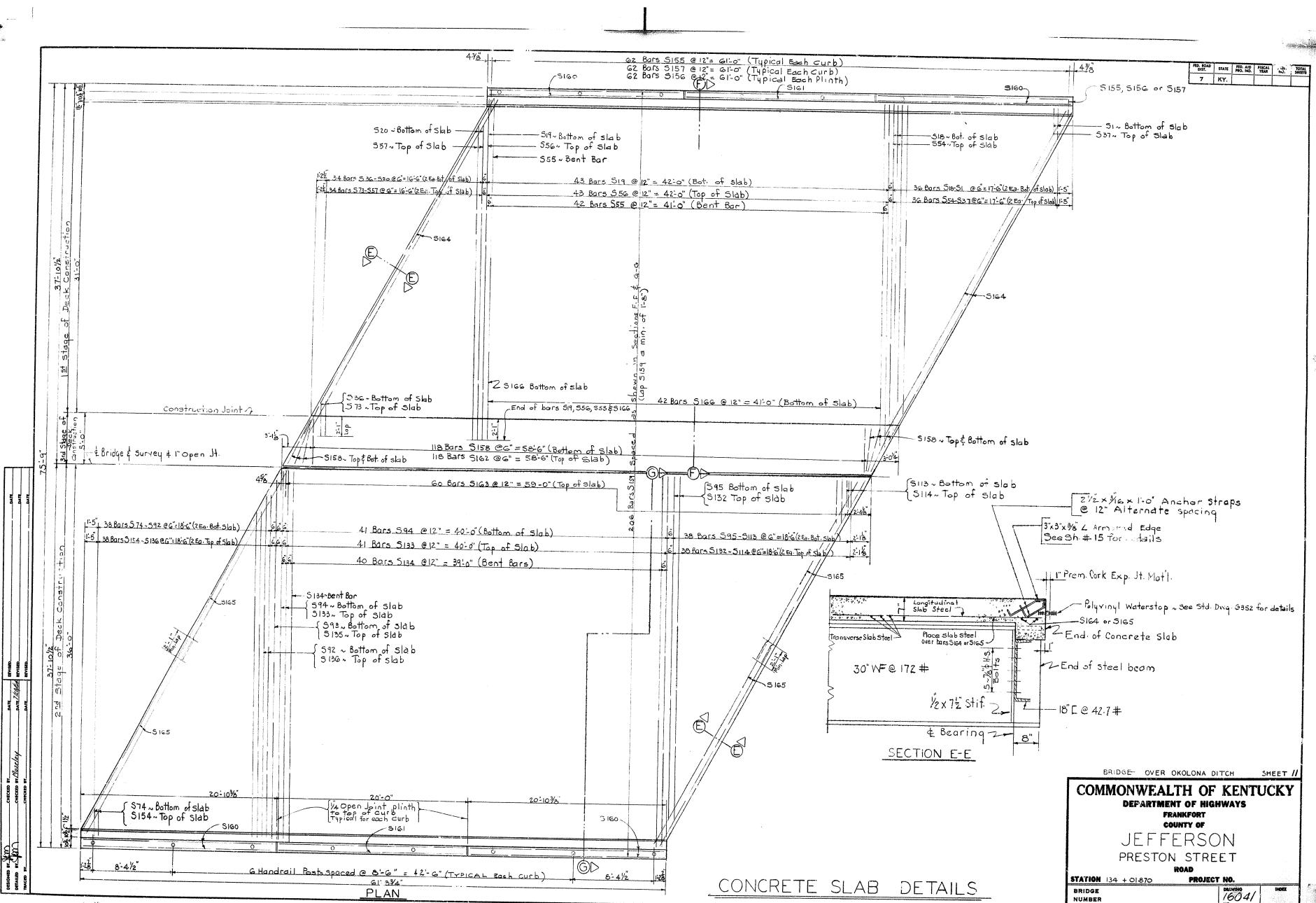
COMMONWEALTH OF KENTUCKY  
DEPARTMENT OF HIGHWAYS  
FRANKFORT  
COUNTY OF  
**JEFFERSON**  
PRESTON STREET

ROAD PROJECT NO.

STATION 134 + 01.870 DIV. NO. 16041

BRIDGE NUMBER

NO.	DATE	BY	CHK	APP	NO.	TOTAL SHEETS
7						



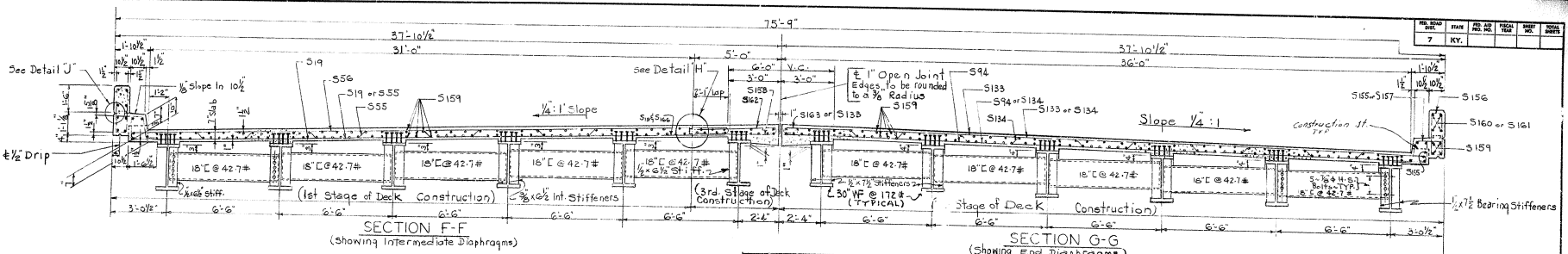
BRIDGE OVER OKOLONA DITCH SHEET 11

**COMMONWEALTH OF KENTUCKY**  
 DEPARTMENT OF HIGHWAYS  
 FRANKFORT  
 COUNTY OF  
**JEFFERSON**  
 PRESTON STREET  
 ROAD

STATION 134 + 01.870 PROJECT NO. 16041

CONCRETE SLAB DETAILS

NO.	DATE	BY	CHKD.	APP.	REVISION
7					



**BILL OF REINFORCEMENT**

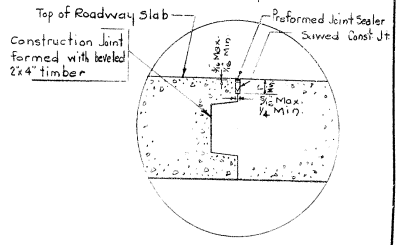
No.	Type	Qty	Length Ft In	Location	a				b				c				d				No.	Type	Qty	Length Ft In	Location
					Ft	In	Ft	In	Ft	In	Ft	In	Ft	In	Ft	In	Ft	In	Ft	In					
S1	Str	2	5 3/4	Bottom of Slab 1st Pour															S56	0	4 3/4	5 3/4	35 2	Top of Slab 1st Pour	
S2	2	4 9																S57	2	32 11					
S3	2	6 5																S58	2	31 2					
S4	2	9 11																S59	2	29 5					
S5	2	11 8																S60	2	27 8					
S6	2	13 4																S61	2	25 11					
S7	2	15 1																S62	2	24 3					
S8	2	16 7																S63	2	22 6					
S9	2	18 7																S64	2	20 9					
S10	2	20 4																S65	2	19 0					
S11	2	22 1																S66	2	17 3					
S12	2	23 9																S67	2	15 6					
S13	2	25 6																S68	2	13 10					
S14	2	27 3																S69	2	12 1					
S15	2	29 0																S70	2	10 4					
S16	2	30 8																S71	2	8 7					
S17	2	32 5																S72	2	6 11					
S18	2	33 11																S73	0	5 3	0 10	0 4 1/2	5 7 1/2		
S19	4 3	31 7																S74	0	5 2					
S20	2	29 10																S75	0	3 0	0 10	0 4 1/2	3 10 3/4		
S21	2	28 1																S76	2	4 9					
S22	2	26 4																S77	2	2 6 5					
S23	2	24 7																S78	2	1 11 8					
S24	2	22 11																S79	2	1 0 9					
S25	2	21 2																S80	2	1 9 5					
S26	2	19 5																S81	2	1 8 7					
S27	2	17 8																S82	2	1 7 3					
S28	2	15 11																S83	2	1 6 7					
S29	2	14 3																S84	2	1 5 11					
S30	2	12 6																S85	2	1 4 3					
S31	2	10 9																S86	2	1 3 7					
S32	2	9 0																S87	2	1 2 9					
S33	2	7 4																S88	2	1 1 11					
S34	2	5 7																S89	2	1 0 4					
S35	0	3 10																S90	2	29 0					
S36	2	4 3	Top															S91	2	32 15					
S37	2	6 2																S92	2	34 2					
S38	2	7 8																S93	42	36 7					
S39	2	9 5																S94	2	38 4					
S40	2	11 2																S95	2	40 1					
S41	2	12 11																S96	2	41 9					
S42	2	14 8																S97	2	42 8					
S43	2	16 5																S98	2	43 7					
S44	2	18 2																S99	2	44 6					
S45	2	19 10																S100	2	45 5					
S46	2	21 7																S101	2	46 4					
S47	2	23 4																S102	2	47 3					
S48	2	25 0																S103	2	48 2					
S49	2	26 9																S104	2	49 1					
S50	2	28 6																S105	2	50 0					
S51	2	30 3																S106	2	50 9					
S52	2	32 0																S107	2	51 8					
S53	2	33 11																S108	2	52 7					
S54	0	33 8	Slab 1st Pour															S109	2	4 6	2 10	0 10	0 4 1/2	3 2 1/4	
S55	0	4 2	Bent Bar in Slab															S110	2	6 3	0 10	0 4 1/2	4 1 1/2		

ESTIMATE OF QUANTITIES

CONCRETE, CLASS 'A' \* 117.6 CU YDS.

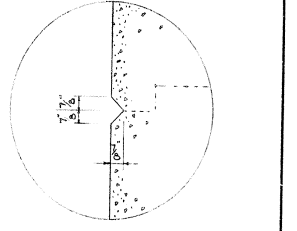
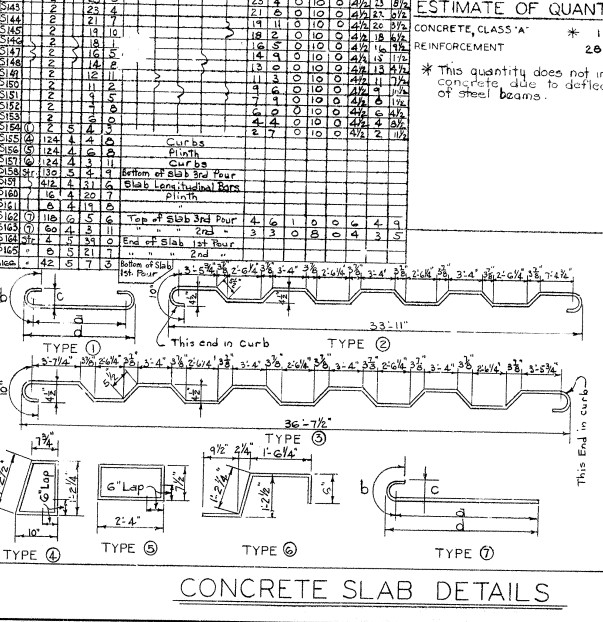
REINFORCEMENT 20045 LBS.

\* This quantity does not include concrete, due to deflection of steel beams.



DETAIL 'H'

For additional details & notes on Construction Joint - See Std. Dwg. No. C-353



BRIDGE OVER OKLOMA DITCH SHEET 12

**COMMONWEALTH OF KENTUCKY**

DEPARTMENT OF HIGHWAYS

FRANKFORT

COUNTY OF

**JEFFERSON**

PRESTON STREET

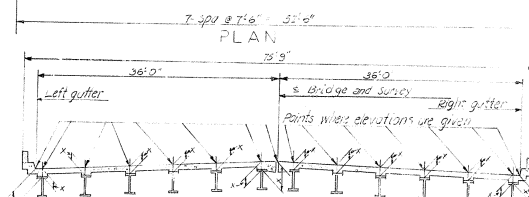
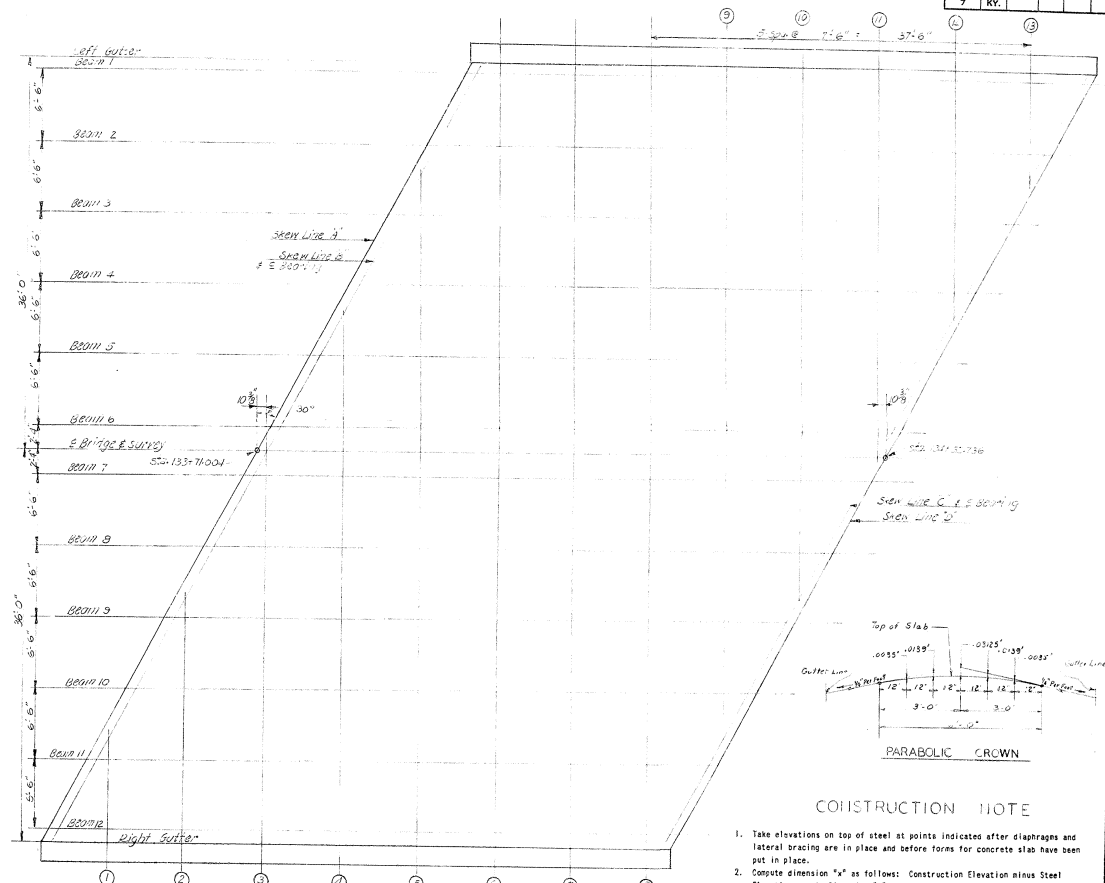
ROAD

STATION 134 + 01.870 PROJECT NO. 16041

BRIDGE NUMBER DATE NO.

DRAWING NO. \_\_\_\_\_ DATE \_\_\_\_\_  
 SHEET NO. \_\_\_\_\_ OF \_\_\_\_\_ SHEETS  
 PROJECT NO. \_\_\_\_\_ DATE \_\_\_\_\_  
 DRAWING TITLE \_\_\_\_\_

LOCATION	LEFT CUTLINE 19		BEAM NO. 1		BEAM NO. 2		BEAM NO. 3		BEAM NO. 4		BEAM NO. 5		BEAM NO. 6	
	CONSTR. ELEV.	STEEL TOP ELEV.	CONSTR. ELEV.	STEEL TOP ELEV.	CONSTR. ELEV.	STEEL TOP ELEV.	CONSTR. ELEV.	STEEL TOP ELEV.	CONSTR. ELEV.	STEEL TOP ELEV.	CONSTR. ELEV.	STEEL TOP ELEV.	CONSTR. ELEV.	STEEL TOP ELEV.
SKW LN A TOP	462.246		462.246		462.246		462.246		462.246		462.246		462.246	
SKW LN B TOP	462.246		462.246		462.246		462.246		462.246		462.246		462.246	
SKW LN C TOP	462.246		462.246		462.246		462.246		462.246		462.246		462.246	
SKW LN D TOP	462.246		462.246		462.246		462.246		462.246		462.246		462.246	
SKW LN E TOP	462.246		462.246		462.246		462.246		462.246		462.246		462.246	
GRID LN 04 TOP		462.246		462.246		462.246		462.246		462.246		462.246		462.246
GRID LN 05 TOP		462.246		462.246		462.246		462.246		462.246		462.246		462.246
GRID LN 06 TOP		462.246		462.246		462.246		462.246		462.246		462.246		462.246
GRID LN 07 TOP		462.246		462.246		462.246		462.246		462.246		462.246		462.246
GRID LN 08 TOP		462.246		462.246		462.246		462.246		462.246		462.246		462.246
GRID LN 09 TOP		462.246		462.246		462.246		462.246		462.246		462.246		462.246
GRID LN 10 TOP		462.246		462.246		462.246		462.246		462.246		462.246		462.246
GRID LN 11 TOP		462.246		462.246		462.246		462.246		462.246		462.246		462.246
GRID LN 12 TOP		462.246		462.246		462.246		462.246		462.246		462.246		462.246
GRID LN 13 TOP		462.246		462.246		462.246		462.246		462.246		462.246		462.246
GRID LN 14 TOP		462.246		462.246		462.246		462.246		462.246		462.246		462.246
GRID LN 15 TOP		462.246		462.246		462.246		462.246		462.246		462.246		462.246
GRID LN 16 TOP		462.246		462.246		462.246		462.246		462.246		462.246		462.246
GRID LN 17 TOP		462.246		462.246		462.246		462.246		462.246		462.246		462.246
GRID LN 18 TOP		462.246		462.246		462.246		462.246		462.246		462.246		462.246
GRID LN 19 TOP		462.246		462.246		462.246		462.246		462.246		462.246		462.246
GRID LN 20 TOP		462.246		462.246		462.246		462.246		462.246		462.246		462.246
GRID LN 21 TOP		462.246		462.246		462.246		462.246		462.246		462.246		462.246
GRID LN 22 TOP		462.246		462.246		462.246		462.246		462.246		462.246		462.246
GRID LN 23 TOP		462.246		462.246		462.246		462.246		462.246		462.246		462.246
GRID LN 24 TOP		462.246		462.246		462.246		462.246		462.246		462.246		462.246
GRID LN 25 TOP		462.246		462.246		462.246		462.246		462.246		462.246		462.246
GRID LN 26 TOP		462.246		462.246		462.246		462.246		462.246		462.246		462.246
GRID LN 27 TOP		462.246		462.246		462.246		462.246		462.246		462.246		462.246
GRID LN 28 TOP		462.246		462.246		462.246		462.246		462.246		462.246		462.246
GRID LN 29 TOP		462.246		462.246		462.246		462.246		462.246		462.246		462.246
GRID LN 30 TOP		462.246		462.246		462.246		462.246		462.246		462.246		462.246
GRID LN 31 TOP		462.246		462.246		462.246		462.246		462.246		462.246		462.246
GRID LN 32 TOP		462.246		462.246		462.246		462.246		462.246		462.246		462.246
GRID LN 33 TOP		462.246		462.246		462.246		462.246		462.246		462.246		462.246
GRID LN 34 TOP		462.246		462.246		462.246		462.246		462.246		462.246		462.246
GRID LN 35 TOP		462.246		462.246		462.246		462.246		462.246		462.246		462.246
GRID LN 36 TOP		462.246		462.246		462.246		462.246		462.246		462.246		462.246
GRID LN 37 TOP		462.246		462.246		462.246		462.246		462.246		462.246		462.246
GRID LN 38 TOP		462.246		462.246		462.246		462.246		462.246		462.246		462.246
GRID LN 39 TOP		462.246		462.246		462.246		462.246		462.246		462.246		462.246
GRID LN 40 TOP		462.246		462.246		462.246		462.246		462.246		462.246		462.246
GRID LN 41 TOP		462.246		462.246		462.246		462.246		462.246		462.246		462.246
GRID LN 42 TOP		462.246		462.246		462.246		462.246		462.246		462.246		462.246
GRID LN 43 TOP		462.246		462.246		462.246		462.246		462.246		462.246		462.246
GRID LN 44 TOP		462.246		462.246		462.246		462.246		462.246		462.246		462.246
GRID LN 45 TOP		462.246		462.246		462.246		462.246		462.246		462.246		462.246
GRID LN 46 TOP		462.246		462.246		462.246		462.246		462.246		462.246		462.246
GRID LN 47 TOP		462.246		462.246		462.246		462.246		462.246		462.246		462.246
GRID LN 48 TOP		462.246		462.246		462.246		462.246		462.246		462.246		462.246
GRID LN 49 TOP		462.246		462.246		462.246		462.246		462.246		462.246		462.246
GRID LN 50 TOP		462.246		462.246		462.246		462.246		462.246		462.246		462.246



TYPICAL CROSS SECTION  
CONSTRUCTION ELEVATIONS

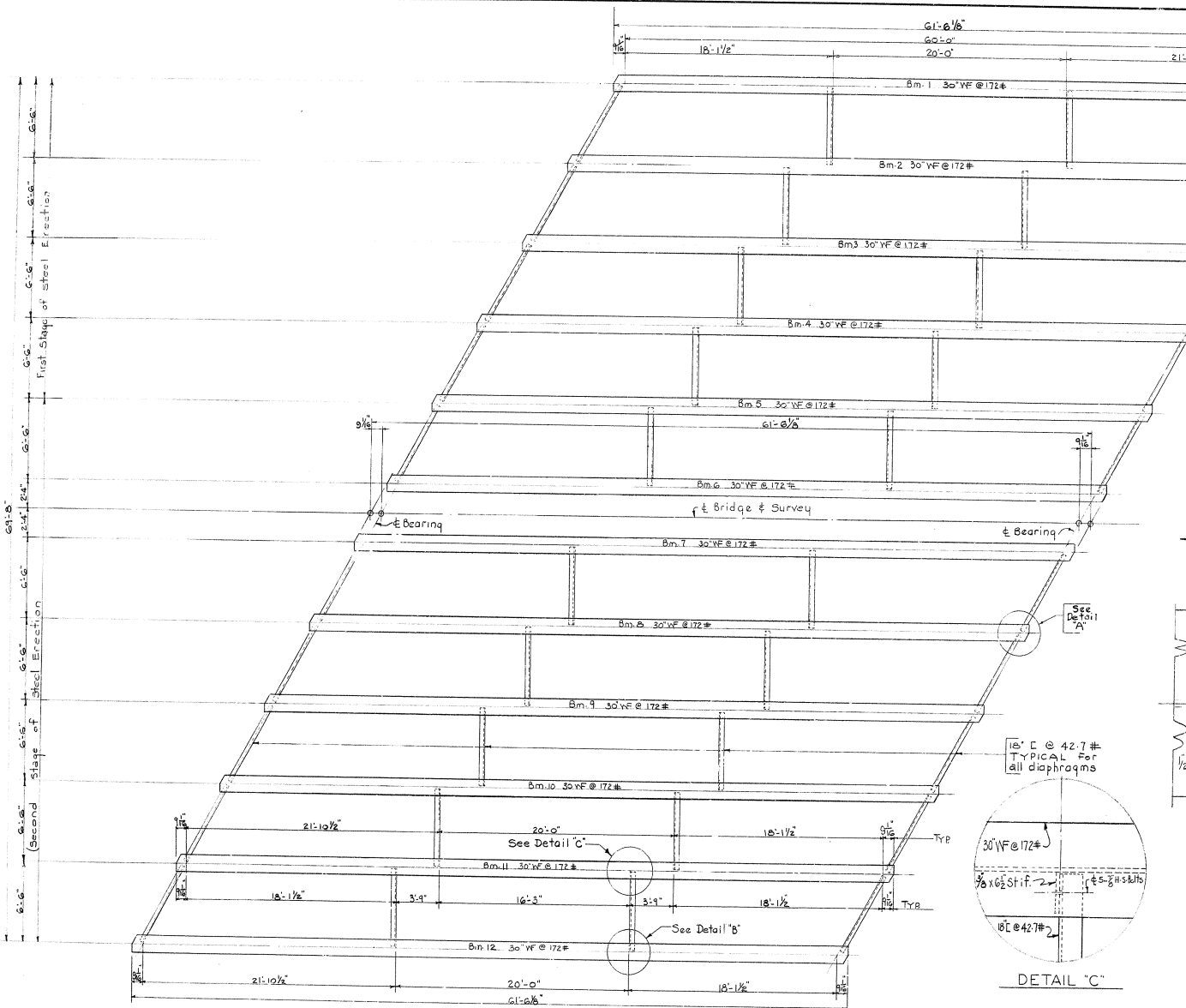
- CONSTRUCTION NOTE**
1. Take elevations on top of steel at points indicated after diaphragms and lateral bracing are in place and before forms for concrete slab have been set in place.
  2. Compute dimension "x" as follows: Construction Elevation minus Steel Elevation equals Dimension "x". Construction Elevations include center due to weight of steel beam, concrete slab, plinth, curb, handrail and future surfacing.
  3. For setting templates, measure Dimension "x" above top of steel for top of template. Do not set template by elevations.
  4. Construct handrail plinth to curb grade. Do not add camber to handrail plinth.

BE USE OVER SHOULDER DITCH SHEET 13

**COMMONWEALTH OF KENTUCKY**  
 DEPARTMENT OF HIGHWAYS  
 FRANKFORT  
 COUNTY OF  
**JEFFERSON**  
 PRESTON STREET ROAD

STATION 34+01.870 PROJECT NO.  
 DRAWING  
 BRIDGE NUMBER 16041 INDEX

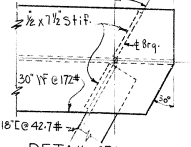
DESIGNED BY	DATE
CHECKED BY	DATE
APPROVED BY	DATE
PROJECT NO.	
BRIDGE NO.	



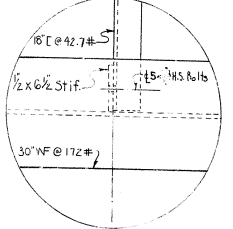
FRAMING PLAN

STEEL FRAMING PLAN

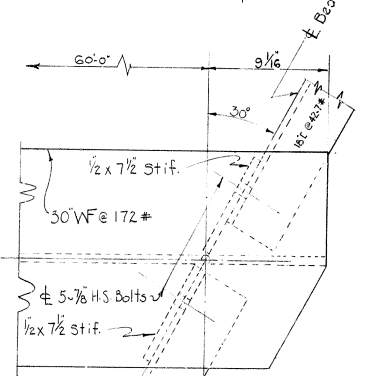
NO.	SCALE	DATE	BY	CHECKED	APPROVED
7	KY.				



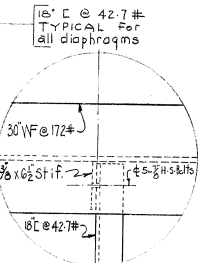
DETAIL 'D'  
(Typical for bearing stiffeners  
(Exterior Bedms))



DETAIL 'B'  
Typical for intermediate stiffeners  
on beams 1, 6, 7, & 12



DETAIL 'A'



DETAIL 'C'

BRIDGE OVER OKOLONA DITCH SHEET 14

**COMMONWEALTH OF KENTUCKY**  
DEPARTMENT OF HIGHWAYS  
FRANKFORT COUNTY OF  
JEFFERSON  
PRESTON STREET  
ROAD

STATION 134 + 01.870 PROJECT NO. 16041  
BRIDGE NUMBER NUMBER

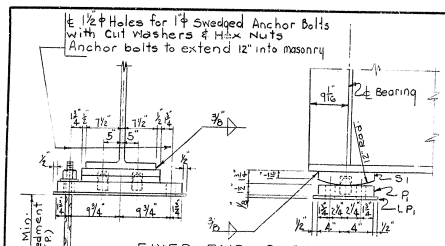
REV.	DATE	BY	CHK	REASON
7	KY.			

**SURFACE FINISH OF STEEL - SPECIFICATIONS**

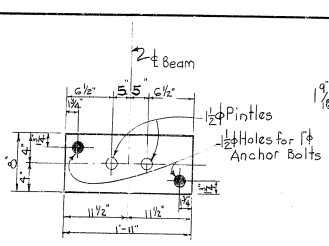
Steel Slabs	A.S.A. 2000
Heavy Plates in contact in shoes to be welded	A.S.A. 1000
Milled Ends of Compression Members, Stiffeners & Fillers	A.S.A. 500
Bridge Rollers & Rockers	A.S.A. 250
Pins & Pin Holes	A.S.A. 125

**A.S.T.M. Specifications**

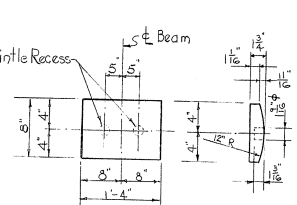
Structural Steel	Current Specifications
Steel Pins	A108 Current Spec. (Grade 1015 to 1030 Inc.)
Sheet Lead & Lead for Anchor Joints	B24 Current Spec.
Pinfiles	A36 or A108 Current Spec. (Grade 1015 to 1030 Inc.)



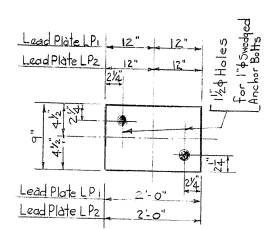
**FIXED END SHOE**



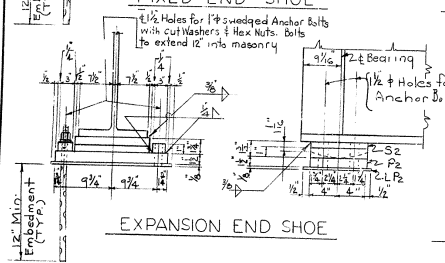
**PLAN MASONRY PLATE P1**



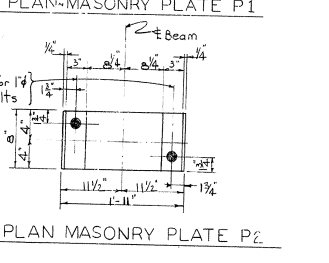
**SOLE PLATE S1**



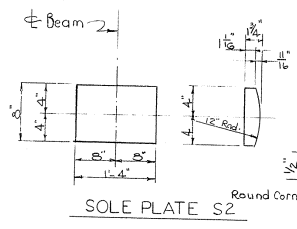
**LEAD PLATES LPI OR LP2**



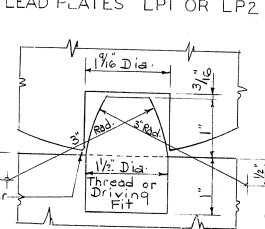
**EXPANSION END SHOE**



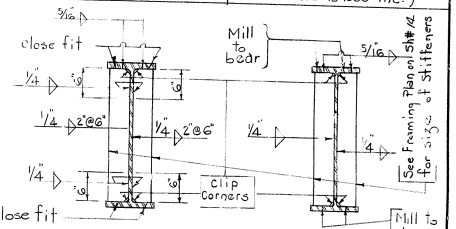
**PLAN MASONRY PLATE P2**



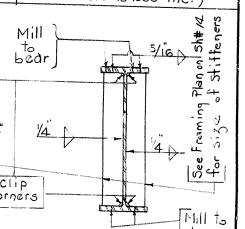
**SOLE PLATE S2**



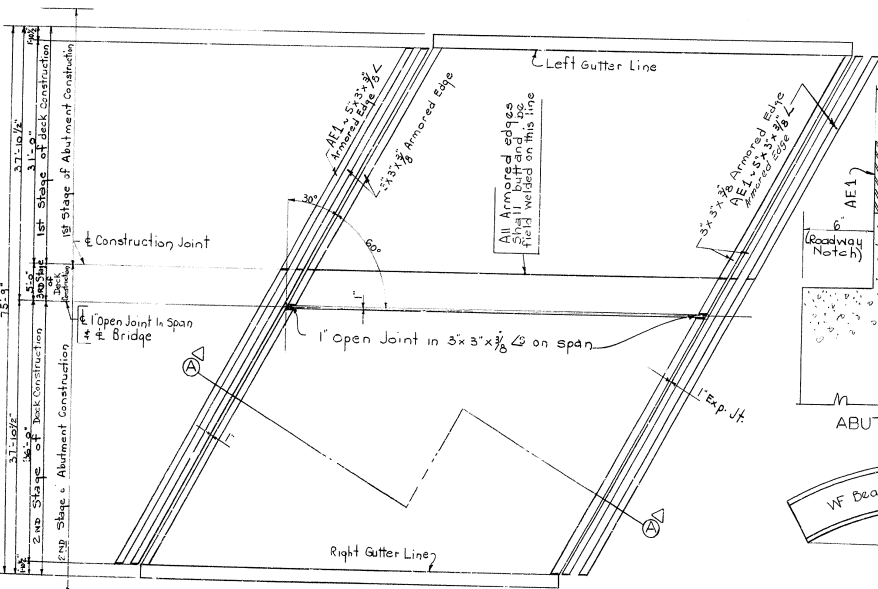
**DETAIL OF PIN AND RECESS**



**INTERMEDIATE STIFFENER**

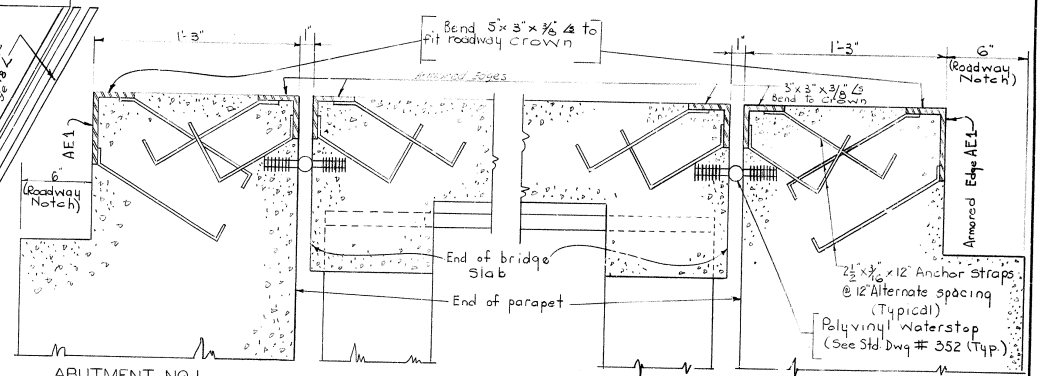


**BEARING STIFFENER**



**PLAN**

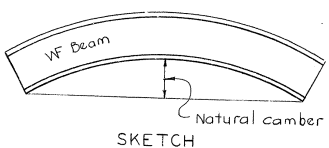
(Showing armored edges)



**SECTION A-A**  
(Showing details of armored edges)

**ESTIMATE OF QUANTITIES**

- Fixed Shoe Assembly \* Structural Steel 151 Lbs.
- Expansion Shoe Assembly \* Structural Steel 104 Lbs
- \* Weights shown include all component parts in one assembly in place.



**SKETCH**

(Natural camber of beam up)  
(No shop camber of beams required)

**SHOES AND SPAN DETAILS**

BRIDGE OVER OKOLONA DITCH SHEET 15

**COMMONWEALTH OF KENTUCKY**  
DEPARTMENT OF HIGHWAYS  
FRANKFORT  
COUNTY OF  
**JEFFERSON**  
PRESTON STREET  
ROAD

STATION 134 + 01.670 PROJECT NO.

BRIDGE NUMBER 15041



NO.	DATE	BY	CHK'D BY	REV.	DATE
7	KT.				

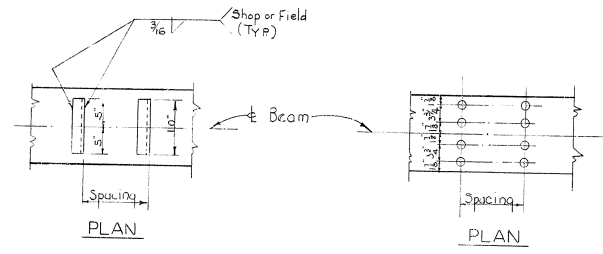
Studs	8, 16 Spa. @ 7 1/2" = 10'-0"	13 Spa. @ 9" = 9'-9"	20 Spa. @ 12" = 20'-0"	13 Spa. @ 9" = 9'-9"	16 Spa. 7 1/2" = 10'-0"
Channels	17 Spa. @ 7" = 9'-11"	14 Spa. @ 8 1/2" = 9'-11"	20 Spa. @ 12" = 20'-0"	14 Spa. @ 8 1/2" = 9'-11"	17 Spa. 7" = 9'-11"
Spirals	3, 30 Spa. @ 4" = 10'-0"	24 Spa. @ 5" = 10'-0"	36 Spa. @ 6 1/2" = 19'-6"	24 Spa. @ 5" = 10'-0"	30 Spa. 4" = 10'-0"

2 1/2" Bearing

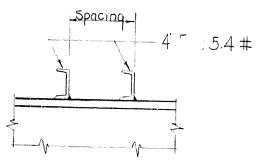
60'-0"   
 61'-6 1/8"

1/2" Bearing

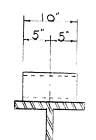
SHEAR CONNECTORS



PLAN



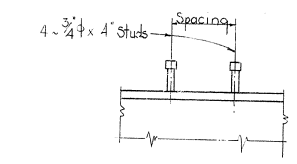
ELEVATION



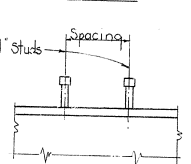
SECTION

(OPTION 1)

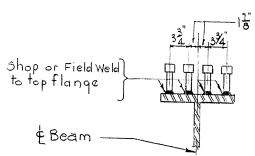
ESTIMATED WEIGHT 4482 LBS



PLAN



ELEVATION



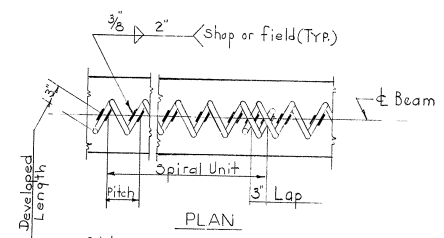
SECTION

(OPTION 2)

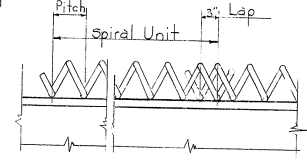
ESTIMATED WEIGHT 2332 LBS

SHEAR CONNECTOR DETAILS

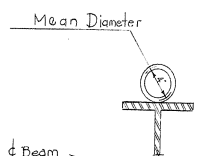
Weights shown are for the entire bridge



PLAN



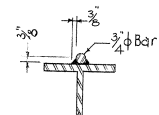
ELEVATION



SECTION

(OPTION 3)

ESTIMATED WEIGHT 2939 LBS



WELD DETAIL

TOTAL ESTIMATE OF QUANTITIES

Structural Steel	145,904 Lbs.
Fixed & Expansion shoes	3,780 Lbs.
* Total	149,684 Lbs.

\* Does not include shear connectors or weld material.

DESIGNED BY: [Signature] DATE: [Blank] CHECKED BY: [Signature] DATE: [Blank]  
 DRAWN BY: [Signature] DATE: [Blank]

SHEAR CONNECTOR DETAILS

BRIDGE OVER OKOLONA DITCH SHEET 16

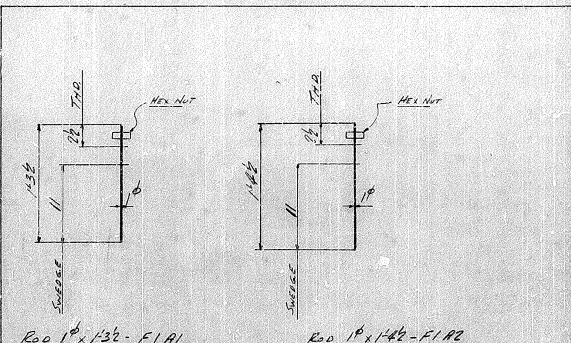
**COMMONWEALTH OF KENTUCKY**  
 DEPARTMENT OF HIGHWAYS  
 FRANKFORT  
 COUNTY OF  
**JEFFERSON**  
 PRESTON STREET  
 ROAD

STATION 134 + 01.870 PROJECT NO. [Blank]  
 BRIDGE NUMBER [Blank] DRAWING NO. 16041



**SECTION LIST  
FIELD RIVETS AND BOLTS  
AMERICAN BRIDGE**

NO.	DIAM.	RIVETS	BOLTS	THICKNESS	LOCATION		
NO.	DIAM.	LENGTH INCHES	HEAD WASH EN	TYP. OF RIVET	GRIP	THICKNESS OF MATERIAL CONNECTED	LOCATION
200	$\frac{7}{8}$		25	HEX WASH EN	1 1/2	1/2"	10W1 TO BEAMS
200	$\frac{7}{8}$		25	HEX WASH EN	1 1/2	3/8"	10W2 TO BEAMS

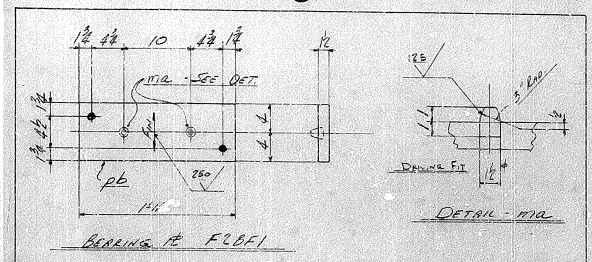


ROD 1 x 1 3/8 - F1A1      ROD 1 x 1 1/2 - F1A2

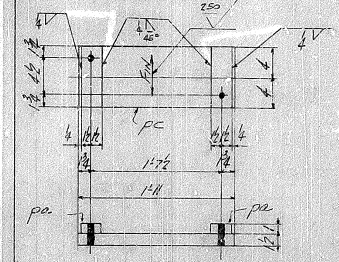
30	31	32	33	34	35	36	37	38	39	40	TOTAL
17	17	17	21	21	21	21	21	21	21	21	11

ITEM NO.	MATERIAL	FIELD AND TYP.	QUANTITY	UNIT PRICE	AMOUNT	REMARKS	GROUP	DATE
1	24 RD 1	1 3/8"	E1A1	S				
2	24	HEX NUTS 1 3/8"		S				
3	24 RD 1	1 1/2"	E1A2	S				
4	24	HEX NUTS 1 1/2"		S				
5	24	HEX NUTS 1 1/2"		S				

BRIDGE OVER OAKLAWN DITCH  
KENTUCKY HIGHWAY DIST.  
BRIDGE NUMBER 16041



BEARING PLATE F1B1



BEARING PLATE F1B2

30	31	32	33	34	35	36	37	38	39	40	TOTAL
17	17	17	21	21	21	21	21	21	21	21	13

ITEM NO.	MATERIAL	FIELD AND TYP.	QUANTITY	UNIT PRICE	AMOUNT	REMARKS	GROUP	DATE
1	12	BEARING PL	F1B1	S				
2	12	PC		S				
3	12	PC		S				
4	24	HEX NUTS 1 3/8"		S				
5	24	HEX NUTS 1 3/8"		S				

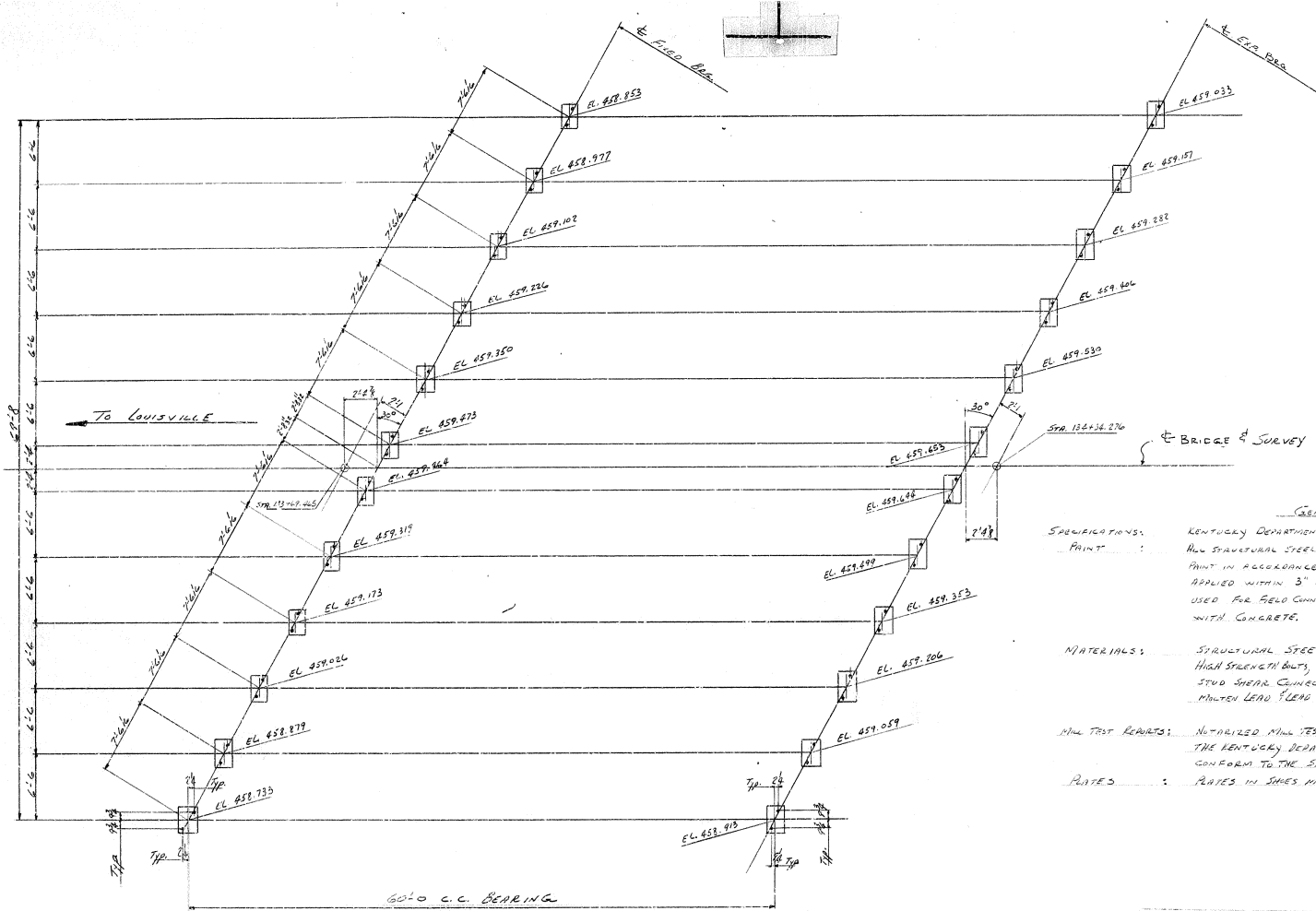
BRIDGE OVER OAKLAWN DITCH  
KENTUCKY HIGHWAY DIST.  
BRIDGE NUMBER 16041

DATE \_\_\_\_\_  
DRAWN \_\_\_\_\_  
CHECKED \_\_\_\_\_  
RECOMMENDED \_\_\_\_\_

Dwg #16041  
Sheet 2

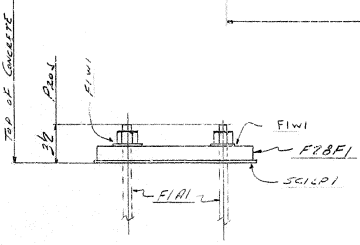
STANDARD DRAWING No. \_\_\_\_\_  
SUBMITTED \_\_\_\_\_ DIRECTOR DIVISION OF \_\_\_\_\_ DATE \_\_\_\_\_  
APPROVED \_\_\_\_\_ STATE HIGHWAY ENGINEER \_\_\_\_\_ DATE \_\_\_\_\_

**BRIDGE**



GENERAL NOTE

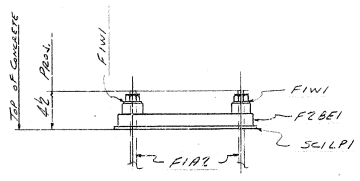
- SPECIFICATIONS:**  
 PAINT: KENTUCKY DEPARTMENT OF HIGHWAYS CURRENT STANDARDS WITH AMENDMENTS  
 ALL STRUCTURAL STEEL SHALL BE GIVEN ONE SAID COAT OF TYPE 1 RED LEAD PAINT IN ACCORDANCE WITH THE SPECIFICATION'S SAID PAINT SHALL NOT BE APPLIED WITHIN 3" OF OPEN HOLES WHERE HIGH STRENGTH BOLTS ARE TO BE USED FOR FIELD CONNECTIONS AND SHALL NOT BE APPLIED TO STEEL IN CONTACT WITH CONCRETE.
- MATERIALS:**  
 STRUCTURAL STEEL: A36-66T  
 HIGH STRENGTH BOLTS, NUTS AND WAINERS: A325-61T  
 STEEL SHEAR CONNECTORS: A108-C1015  
 MATCHED LEAD FLANGES: B29-55
- MIN. TEST REPORTS:** NOTIFIED MIN. TEST REPORTS IN TRIPLICATE SHALL BE FURNISHED THE KENTUCKY DEPARTMENT OF HIGHWAYS SHOWING THAT ALL MATERIALS CONFORM TO THE SPECIFICATIONS.
- NOTES:** RATES IN SHOES MUST BE TRUE AND FREE OF WIND.



ELEVATION WAS GIVEN TO TOP OF CONCRETE

**ANCHOR BOLT PLAN**  
 Anchor Bolts Furnished by American Bridge Div. and set by others in accordance with this plan.

TYPICAL FOR FIXED BEG.



TYPICAL FOR EXP. BEG.

The dimensions on this plan must be strictly followed in all masonry, concrete and building construction or the steelwork will not fit. Report any error or misunderstanding at once.

**NOTICE TO CONTRACTOR**  
 Backcharges for complete work or material materials will not be accepted unless expressly authorized by American Bridge before any such costs are incurred.

Dwg # 16041  
 Sheet 3

BRIDGE OVER OKALOHA DITCH  
 KENTUCKY HIGHWAY DEPT.  
 LOUISVILLE, (JEFFERSON COUNTY), KY.  
 PROJ. SU 478 (13) SP56-138

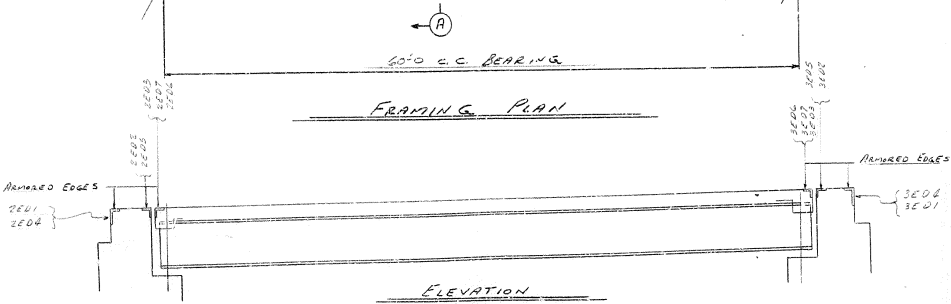
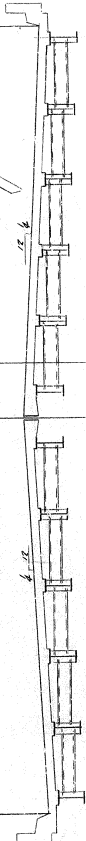
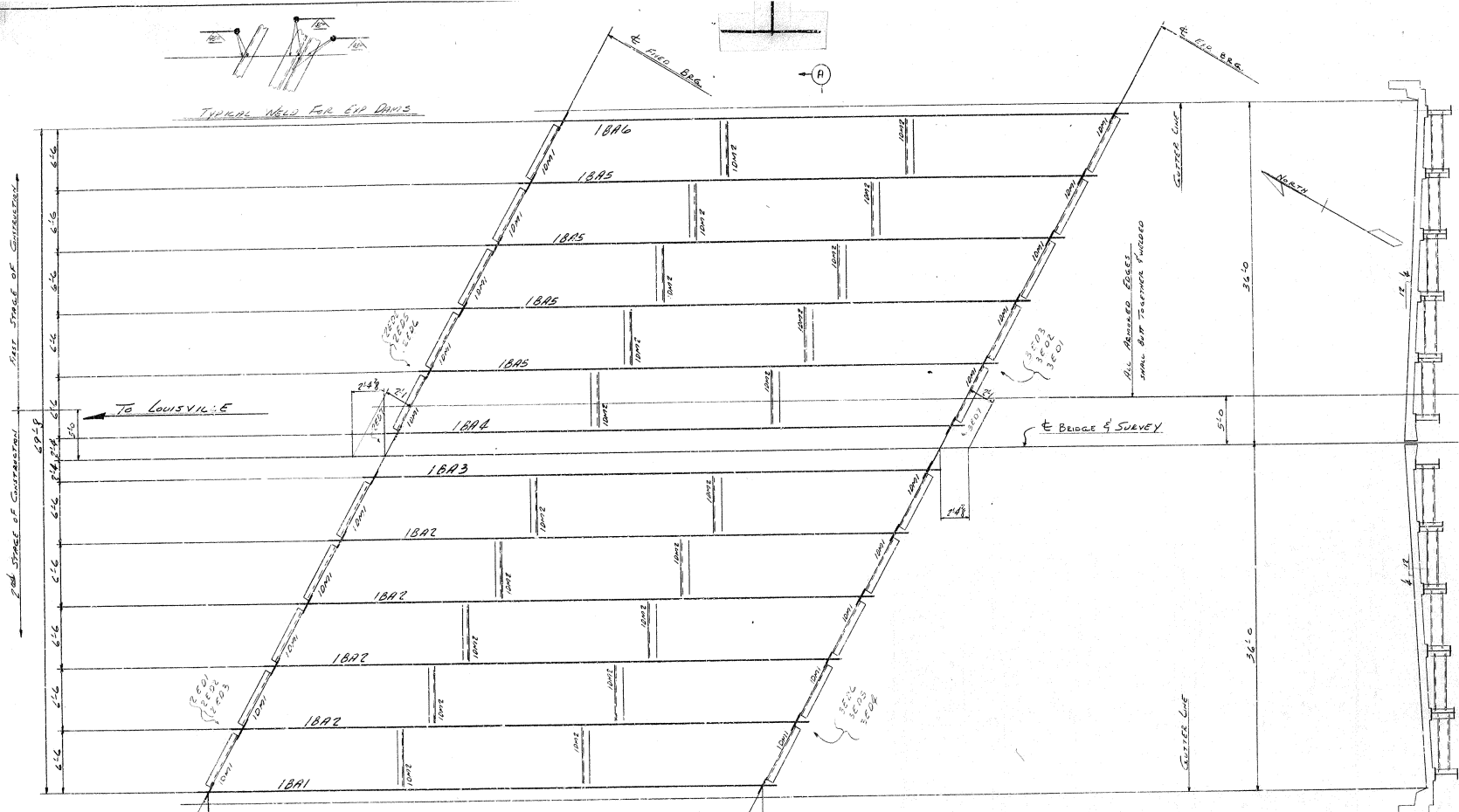
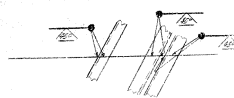
American Bridge (US) United States Steel

F	DATE	BY	CHKD.
E	DATE	BY	CHKD.
D	DATE	BY	CHKD.
C	DATE	BY	CHKD.
B	DATE	BY	CHKD.
A	DATE	BY	CHKD.

FABRICATED BY: **ROANOKE**  
 DRAWING MADE BY: **ROANOKE**  
 MADE BY: **CRM** DATE: **1/16/66** CHECKED BY: **J.P. LINTZ**  
 IN CHARGE OF: **SCOTT**  
 ORDER NO.: **K0239** SHEET NO.: **E1**

10	11	12	13	14	15	16	17	18	19	20

**BRIDGE**



Draw # 16041  
Sheet 4

BRIDGE OVER OKOLONA DITCH  
KENTUCKY HIGHWAY DEPT.  
LOUISVILLE, (JEFFERSON COUNTY), KY.  
Proj. SUR78(3), SP56-138

American Bridge Division of **USS** United States Steel

LABORATORY REPORT BY **LANOKE**

DESIGNED BY **LANOKE**

MADE BY **ERM** BY **SLB** CHECKED BY **J.P. WATERS**

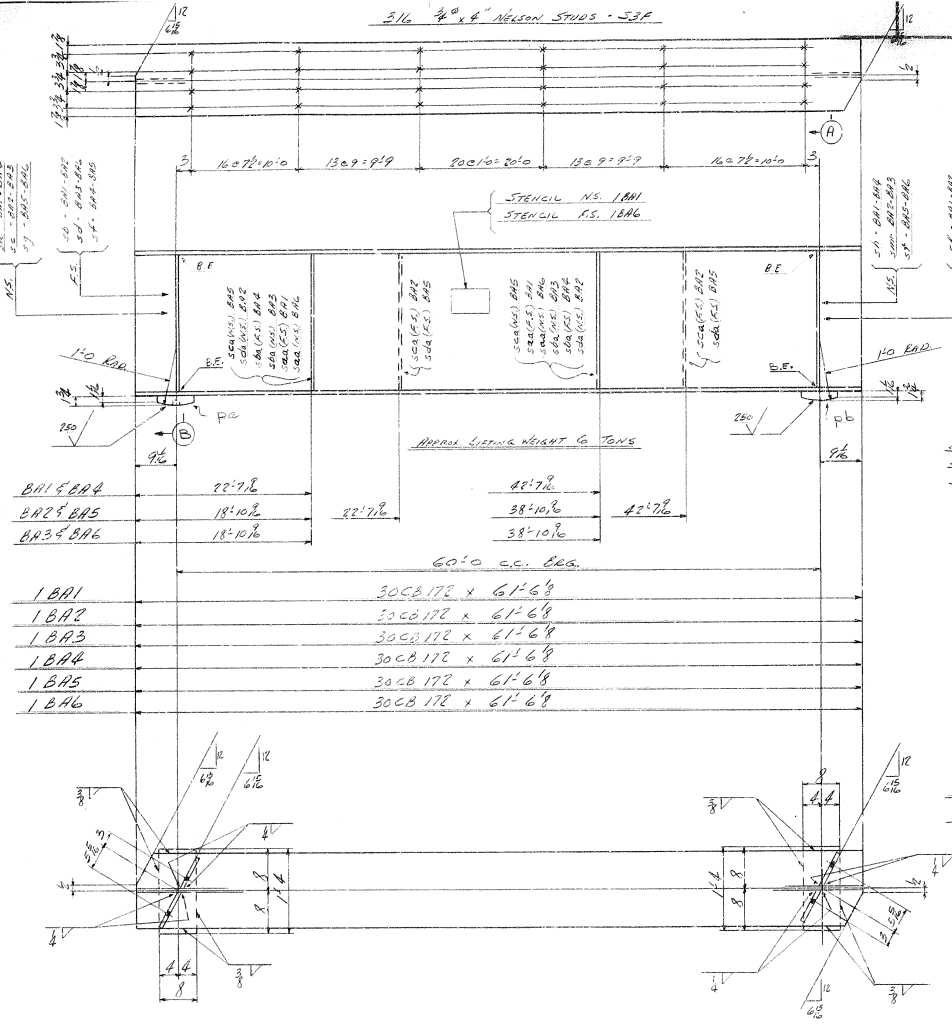
IN CHARGE OF **SCOTT**

DATE NO. **K-0239** SHEET NO. **E2**

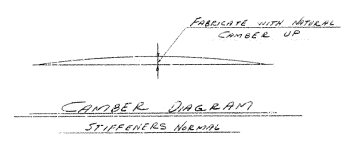
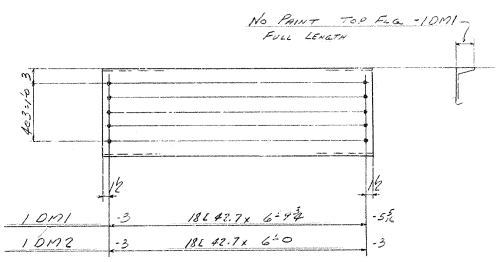
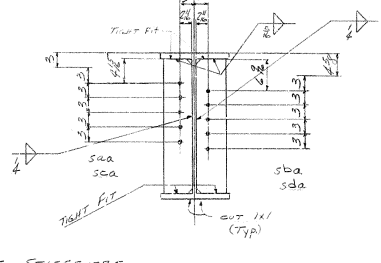
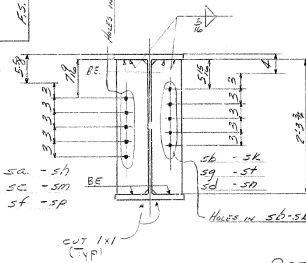
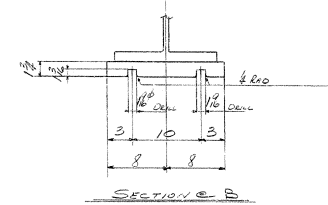
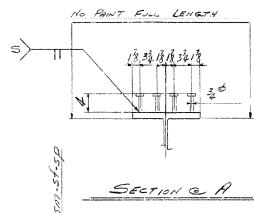
1	2	3	4	5	6	7	8	9	10	11	12	TOTAL
												3

**BRIDGE**

316 4" x 4" NELSON STUDS - S.F.P.



BA1-BA4	22'-7 1/2"		22'-7 1/2"		22'-7 1/2"		22'-7 1/2"		22'-7 1/2"
BA2-BA5	18'-10 1/2"		22'-7 1/2"		38'-10 1/2"		42'-7 1/2"		
BA3-BA6	18'-10 1/2"				38'-10 1/2"				
60'-0" cc. EEA.									
1BA1	30CB172 x 61'-6 3/8"								
1BA2	30CB172 x 61'-6 3/8"								
1BA3	30CB172 x 61'-6 3/8"								
1BA4	30CB172 x 61'-6 3/8"								
1BA5	30CB172 x 61'-6 3/8"								
1BA6	30CB172 x 61'-6 3/8"								



**SHOP NOTES**  
 05. DENOTES BEARING END. (MILL TO BEAR)  
 SEE GENERAL NOTE ON SHEET E1

Dwg # 16041

Sheet 5

Open Holes are for High-Strength Structural Bolts. No Paint in the 3" x 3" Hole in High-Strength Structural Bolts.

LINE NO.	QTY	DESCRIPTION	UNIT	REMARKS	DATE	BY	CHECKED	APPROVED
1	1	1 CB 30 I72	61'-6 3/8"	1BA1	11/14	4	10/1	
2	1	1 CB 30 I72	61'-6 3/8"	1BA2	11/14	4	10/1	
3	1	1 CB 30 I72	61'-6 3/8"	1BA3	11/14	4	10/1	
4	1	1 CB 30 I72	61'-6 3/8"	1BA4	11/14	4	10/1	
5	1	1 CB 30 I72	61'-6 3/8"	1BA5	11/14	4	10/1	
6	1	1 CB 30 I72	61'-6 3/8"	1BA6	11/14	4	10/1	
7	2	2 PL 78 x 8	2' 3 3/8"	SA	BA1-BA6			
8	2	2 PL 78 x 8	2' 3 3/8"	SC	BA2-BA5			
9	2	2 PL 78 x 8	2' 3 3/8"	SA	BA5-BA6			
10	2	2 PL 78 x 8	2' 3 3/8"	SB	BA1-BA2			
11	2	2 PL 78 x 8	2' 3 3/8"	SD	BA3-BA4			
12	2	2 PL 78 x 8	2' 3 3/8"	SE	BA4-BA5			
13	2	2 PL 78 x 8	2' 3 3/8"	SA	BA1-BA6			
14	2	2 PL 78 x 8	2' 3 3/8"	SB	BA1-BA2			
15	2	2 PL 78 x 8	2' 3 3/8"	SD	BA3-BA4			
16	2	2 PL 78 x 8	2' 3 3/8"	SE	BA4-BA5			
17	2	2 PL 78 x 8	2' 3 3/8"	SA	BA1-BA6			

HOLES 1/8"

NO.	1	2	3	4	5	6	7	8	9	10	11	12
DATE	1/12	1/17	2/3	1/1	2/15							

BRIDGE OVER CROOKING CREEK  
 KENTUCKY HIGHWAY DEPT.  
 LOUISVILLE (JEFFERSON COUNTY)  
 PROJ. SUG-78 (13) SP56-138

READ THIS FIRST!  
 YES (X) NO

REVISIONS:  
 NO. DATE BY

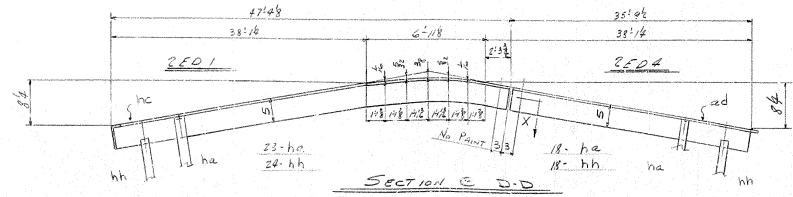
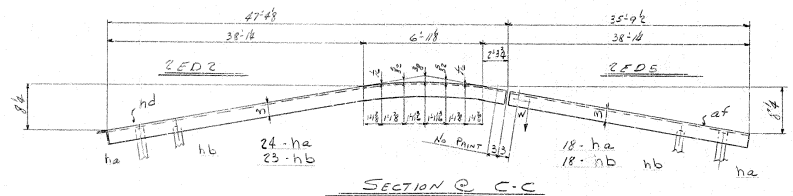
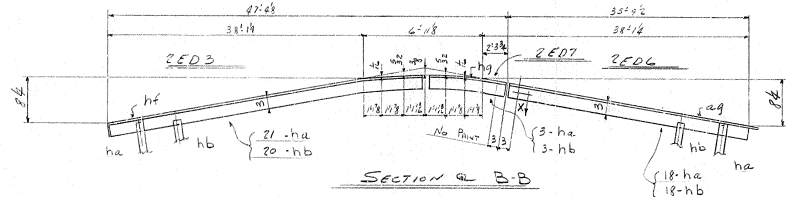
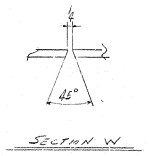
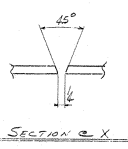
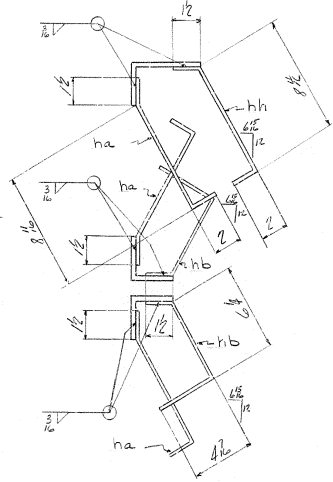
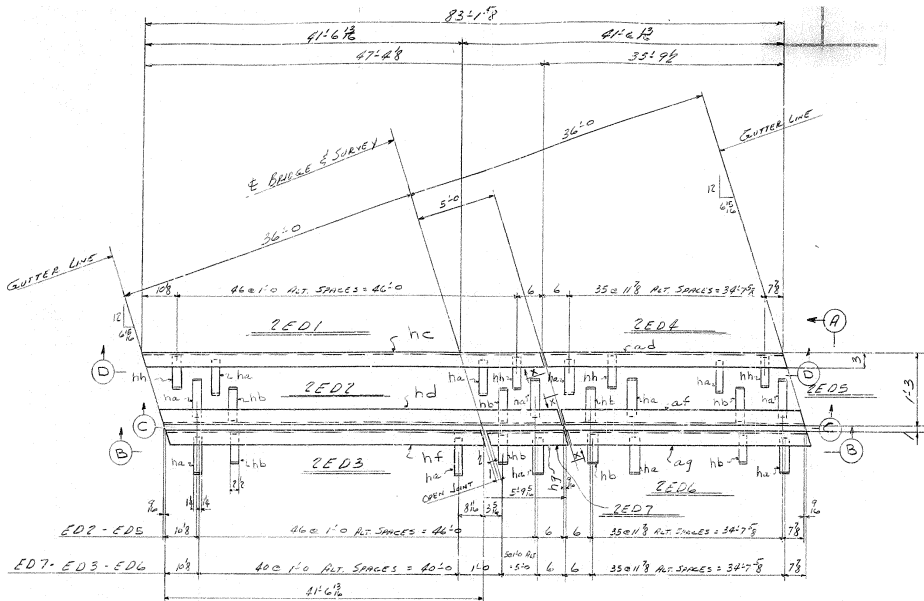
AMERICAN BRIDGE DIVISION OF UNITED STATES STEEL

ORDER NO. K-0239

DATE 11/14







LINE	NO.	DATE	BY	REVISION	DESCRIPTION	SCALE	DATE	BY	REVISION	DESCRIPTION	SCALE	DATE	BY	REVISION	DESCRIPTION
1															
2															
3															
4	1	L	5	3	8	47	5 1/2	SEW		2ED1					
5	2	23	FT	22	20	10		SEW		ha 2					
6	3	24	FT	22	20	10		SEW		hb 2					
7															
8															
9															
10	1	L	3	3	38	47	5 1/2	SEW		2ED2					
11	2	24	FT	22	20	10		SEW		hd					
12	3	23	FT	22	20	10		SEW		ha 2					
13	4	24	FT	22	20	10		SEW		hb 2					
14															
15															
16															
17															
18	1	L	5	3	38	47	5 1/2	SEW		2ED3					
19	2	21	FT	22	20	10		SEW		hf					
20	3	20	FT	22	20	10		SEW		hg					
21															
22															
23															
24															
25															
26	1	L	5	3	38	35	11 3/8			2ED4					
27	2	8	FT							hd					
28	3	8	FT							ha 2					
29										hb 2					
30															
31															
32															
33	1	L	3	3	38	35	11 3/8			2ED5					
34	2	18	FT							af					
35	3	18	FT							ag					
36															
37															
38															
39															
40															
41															
42	1	L	3	3	38	35	11 3/8			2ED6					
43	2	18	FT							ah					
44	3	18	FT							ai					
45															
46															
47															
48															
49															
50															
51															
52															
53	1	L	3	3	38	35	11 3/8			2ED7					
54	2	3	FT							aj					
55	3	3	FT							ak					
56															
57															
58															
59															
60															
61															
62															
63															
64															
65															
66															
67															
68															
69															
70															

Draw# 16041

Sheet 6

BRIDGE OVER ODEONA DAM  
 KENTUCKY HIGHWAY DEPT  
 LOUISVILLE, (JEFFERSON COUNTY), KY.  
 Proj. S-478 (13), SP56-128

ROANOKE TYPE 1  
 YES OR NO  
 YES OR NO

TYPE	10	TYPE	250
NO.	1	NO.	1
DATE	01	DATE	01
BY	28	BY	28

AMERICAN BRIDGE DIVISION OF U.S. UNITED STATES STEEL

DESIGNED BY: ROANOKE

CHECKED BY: ROANOKE

DATE: JAN 1945

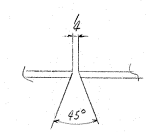
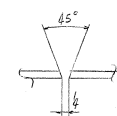
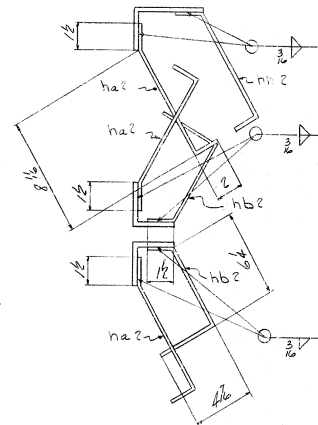
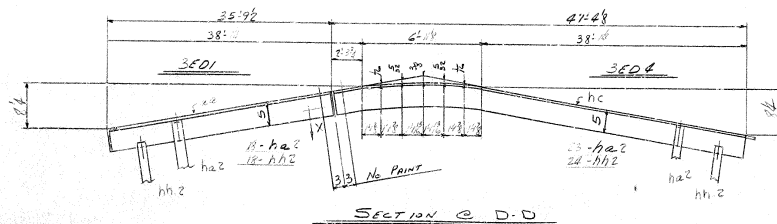
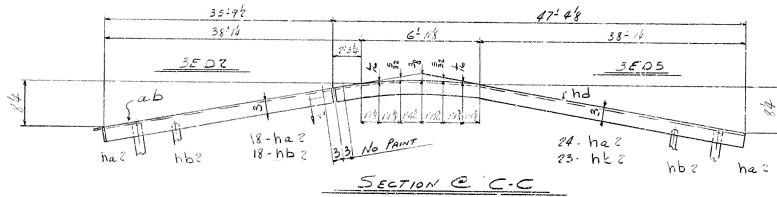
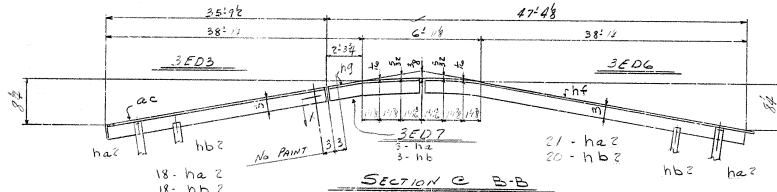
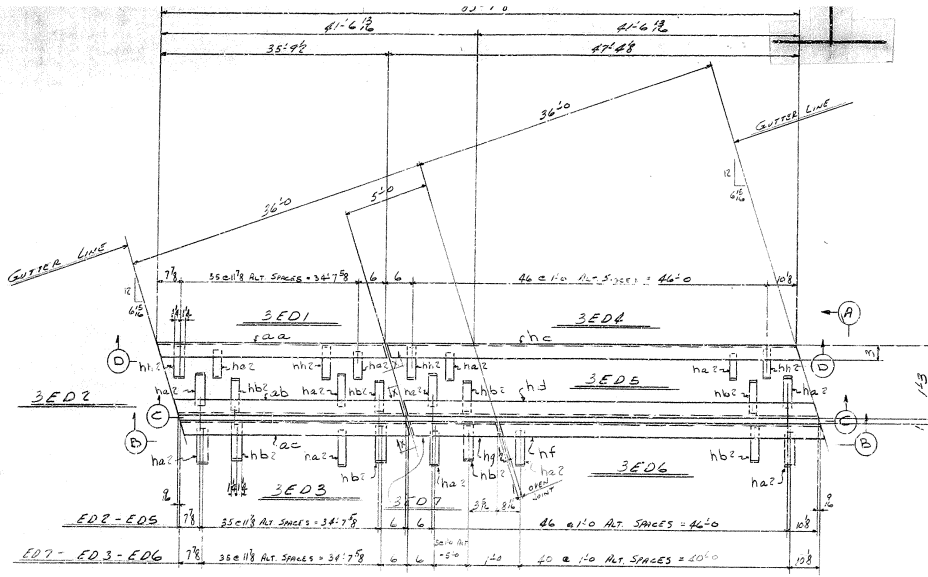
SCALE: AS SHOWN

NO.	1	NO.	1
DATE	01	DATE	01
BY	28	BY	28

PROJECT NO. K-0239

SHEET NO. 2

BRIDGE



LINE NO.	REV.	DATE	BY	CHKD.	DESCRIPTION	QUANTITY	UNIT	REMARKS	NO. OF SHEETS	TOTAL SHEETS
1										
2										
3	1				EXPANSION DAM	3	EO1			
4	1	L	3	3	18	18	18	ha?		
5	1	L	2	2	10	10	10	hb?		
6	1	L	2	2	10	10	10	hb?		
7										
8										
9										
10	1				EXPANSION DAM	3	EO2			
11	1	L	3	3	18	18	18	ha?		
12	1	L	2	2	10	10	10	hb?		
13	1	L	2	2	10	10	10	hb?		
14										
15										
16										
17										
18	1				EXPANSION DAM	3	EO3			
19	1	L	3	3	18	18	18	ha?		
20	1	L	2	2	10	10	10	hb?		
21	1	L	2	2	10	10	10	hb?		
22										
23										
24										
25										
26	1				EXPANSION DAM	3	EO4			
27	1	L	3	3	18	18	18	ha?		
28	1	L	2	2	10	10	10	hb?		
29	1	L	2	2	10	10	10	hb?		
30										
31										
32										
33	1				EXPANSION DAM	3	EO5			
34	1	L	3	3	18	18	18	ha?		
35	1	L	2	2	10	10	10	hb?		
36	1	L	2	2	10	10	10	hb?		
37										
38										
39										
40										
41										
42	1				EXPANSION DAM	3	EO6			
43	1	L	3	3	18	18	18	ha?		
44	1	L	2	2	10	10	10	hb?		
45	1	L	2	2	10	10	10	hb?		
46										
47										
48										
49										
50	1				EXPANSION DAM	3	EO7			
51	1	L	3	3	18	18	18	ha?		
52	1	L	2	2	10	10	10	hb?		
53	1	L	2	2	10	10	10	hb?		
54										
55										
56										
57										
58										
59										
60										
61										
62										
63										
64										
65										
66										
67										
68										
69										
70										

Dwg# 16041  
Sheet 7

BRIDGE OVER OCEANIC DITCH  
KENTUCKY HIGHWAY DEPT.  
LOUISVILLE, (LEFFERSON COUNTY), KY  
Proj. SU 478 (13), SP 56-138

RELEASD TYPE 1  
REIN. YES UN.  
SAP DESIGN METHOD No

DATE	10	REV.	8/31	F	
BY	10	CHKD.	8/31	E	
APP.	10	DATE	8/31	D	
REV.	10	DATE	8/31	C	
REV.	10	DATE	8/31	B	
REV.	10	DATE	8/31	A	

REGISTRATION INFORMATION  
REGISTERED TO: ROANOK  
REGISTERED BY: ROANOK  
DATE OF REGISTRATION: 1/28/65  
BY ORDER OF: SCOTT

FILE LOCATION OF SUPPORTING FILES SHOWN ON THIS SHEET REFER TO EXISTENCE PLANS:  
E2  
K-0239  
3  
BRIDGE